



劲普机械  
Jinpu Mechanical



杭州劲普传动机械有限公司

Hangzhou Jinpu Transmission Mechanical Co., Ltd

[www.jpmach.com](http://www.jpmach.com)

中国·浙江  
ZHEJIANG CHINA



## 公司简介 COMPANY PROFILE

---

Jinpu, An Enterprise in Zhejiang China, is established over 10 years, 50~100 staff, and an area coverage of 5,000+ square meters for 2 manufacturing plants. Our business scope covers manufacturing Sprocket, Gear, Timing Belt Pulley, Taper Bush, Industrial Chain, mainly focus on non-standard machining parts base on customers' drawings.

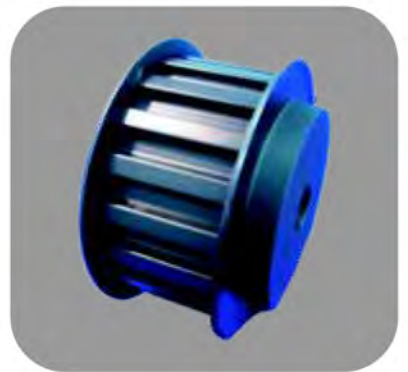
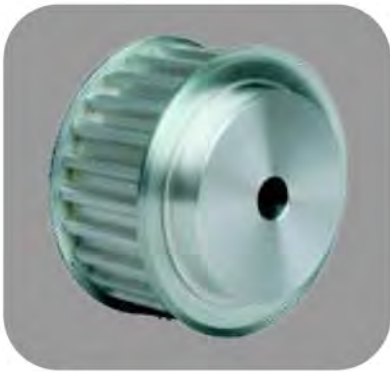
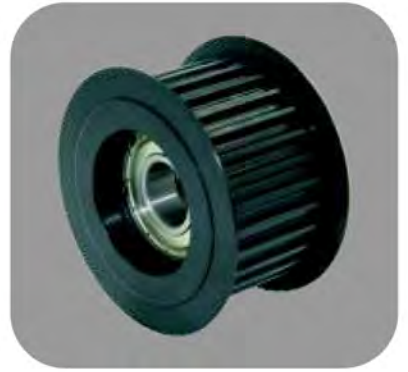




# 目 录

## Catalog

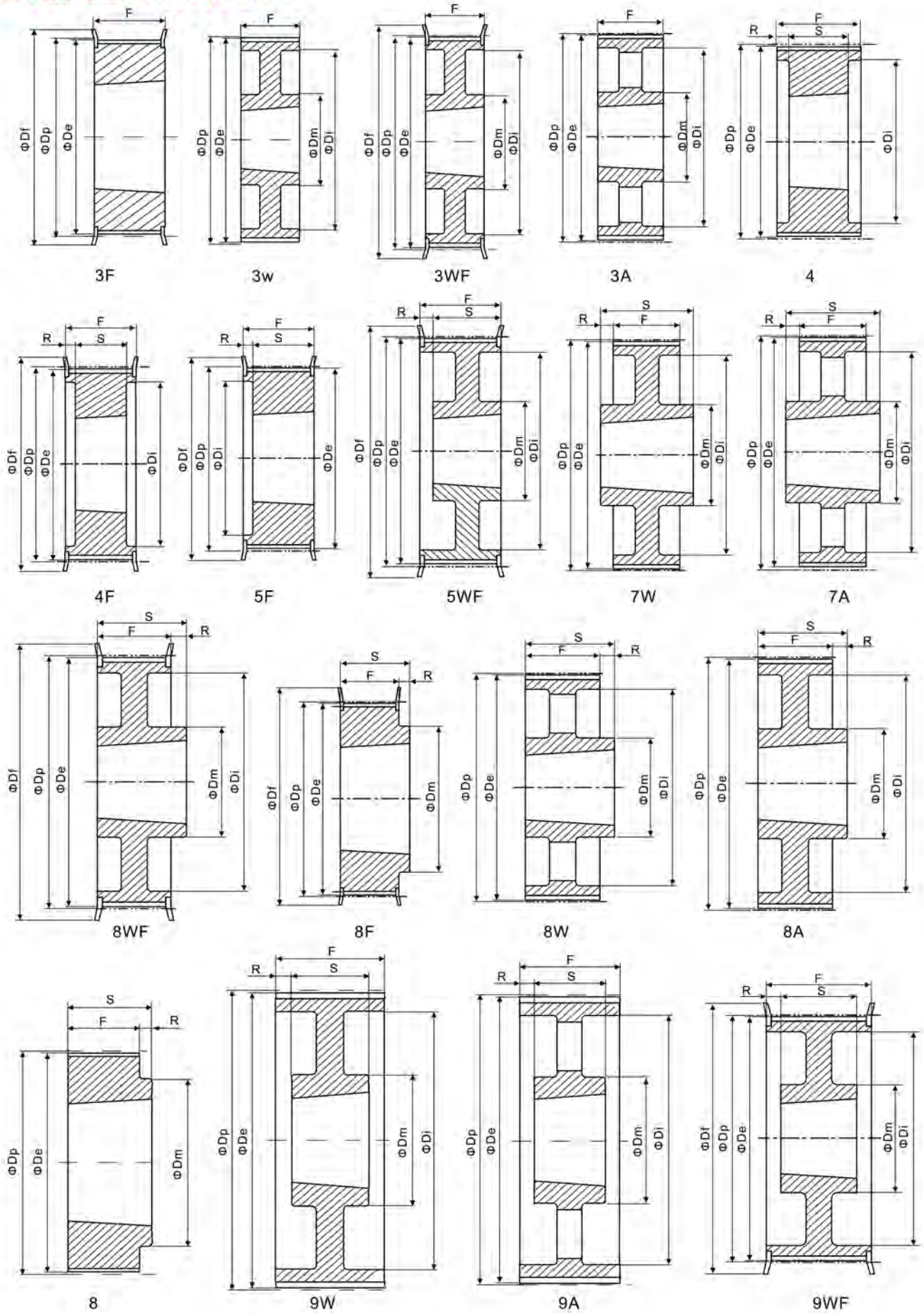
同步轮产品总图 .....	1
General Drawing of Timing Pulleys	
锥孔同步轮结构图 .....	3
Structure Drawing of Taper-bore Timing Pulleys	
直孔和同步轮棒结构图 .....	4
Structure Drawing of Plain-bore Timing Pulleys	
ISO 5294 直孔同步轮 (MXL、XL、L、H型) .....	5
ISO 5294 Taper_bore Timing Pulleys(MXL,XL,L and H)	
ISO 5294 锥孔同步轮 (L、H、XH型) .....	14
ISO 5294 Taper-bore Timing Pulleys(L,H, and XH)	
DIN 7721 直孔同步轮 (T2.5、T5、T10型) .....	19
DIN 7721 Plain-bore Timing Pulleys(T2.5,T5 and T10)	
直孔同步轮 (AT5、AT10型) .....	23
Plain-bore Timing Pulleys(AT5 and AT10)	
HTD直孔同步轮 (3M、5M、8M、14M型) .....	26
HTD Plain-bore Timing Pulleys(3M,5M,8M and 14M)	
HTD锥孔同步轮 (5M、8M、14M型) .....	34
HTD Taper-bore Timing Pulleys(5M,8M and 14M)	
HTD同步轮棒 (3M、5M、8M型) .....	39
HTD Timing Pulley Bars(3M,5M and 8M)	
ISO 5294 同步轮棒 (MXL、XL、L型) .....	40
ISO 5294 Timing Pulleys Bars(MXL,XL, and L)	
DIN 7721 同步轮棒 (T2.5、T5、T10型) (AT5、AT10型) .....	41
DIN 7721 Timing Pulleys Bars(T2.5,T5 and T10)(AT5 and AT10)	
同步轮挡圈及尺寸 .....	42
Flange No. and Dimensions of Timing Pulleys	



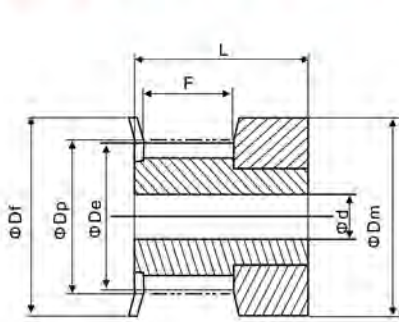




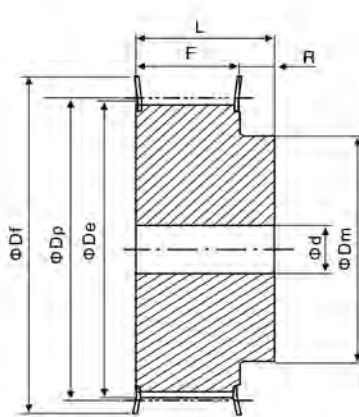
## 锥孔同步轮结构图



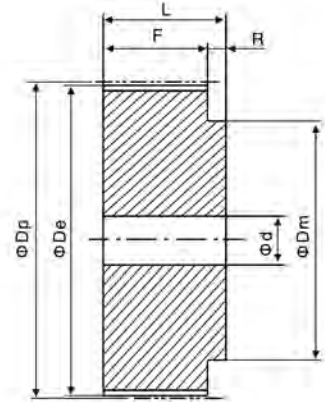
## 直孔和同步轮棒结构图



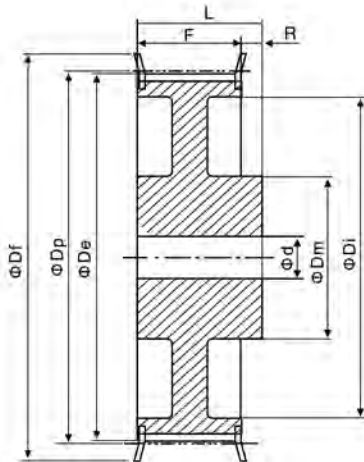
1F



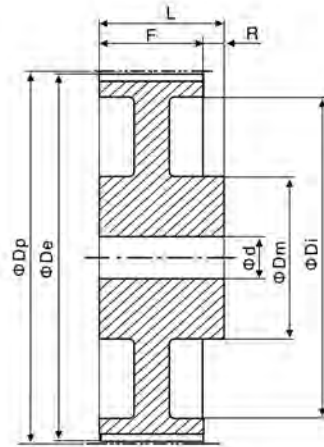
6F



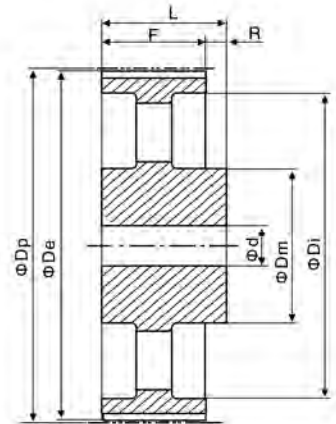
6



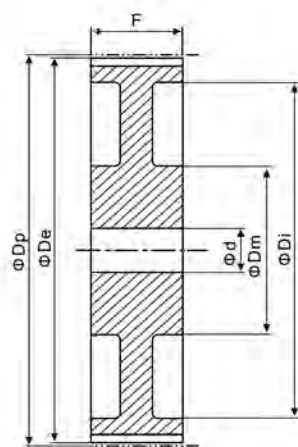
6WF



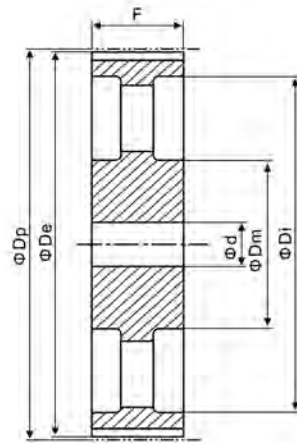
6W



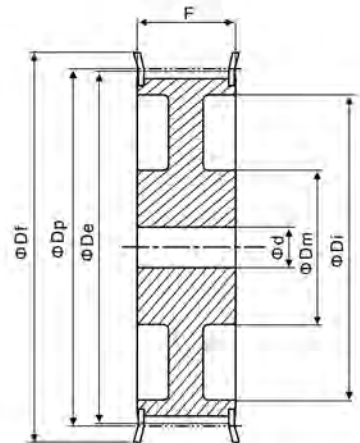
6A



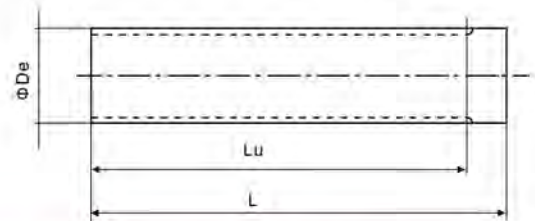
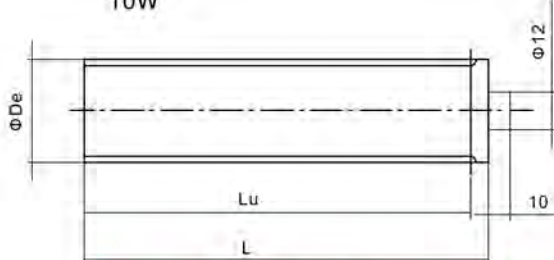
10W



10A



10WF



\*We can produce timing pulley according to the drawings of customer.



### MXL 025 (2.032mm)

规格代码 Part Code	齿数 Number of Teeth	结构 Type	材料 Mat.	Dp	De	Df	Dm	Di	F	L	d	挡板号 Flange Code
16 MXL 025	16	1F	AL	10.35	9.84	15	15	-	8.5	16	-	502
18 MXL 025	18	1F		11.64	11.12	16	16	-	8.5	16	-	503
20 MXL 025	20	1F		12.94	12.43	16	16	-	8.5	16	-	503
22 MXL 025	22	6F		14.23	13.72	17.5	10	-	11	16	-	504
24 MXL 025	24	6F		15.52	15.01	20	10	-	11	16	-	505
28 MXL 025	28	6F		18.11	17.60	25	11	-	11	16	-	506
30 MXL 025	30	6F		19.40	18.90	25	12	-	11	16	-	506
32 MXL 025	32	6F		20.70	20.19	25	14	-	11	16	-	506
36 MXL 025	36	6F		23.29	22.78	28	16	-	11	16	-	507
40 MXL 025	40	6F		25.87	25.37	32	18	-	11	16	-	509
42 MXL 025	42	6F		27.17	26.67	32	18	-	11	16	-	509
44 MXL 025	44	6F		28.46	27.95	37	18	-	11	16	-	510
48 MXL 025	48	6		31.05	30.54	-	20	-	11	16	-	-
60 MXL 025	60	6		38.81	38.30	-	24	-	11	16	-	-
72 MXL 025	72	6		46.57	46.06	-	25	-	11	16	-	-

### XL 037 (5.08mm)

规格代码 Part Code	齿数 Number of Teeth	结构 Type	材料 Mat.	Dp	De	Df	Dm	Di	F	L	d	挡板号 Flange Code
10 XL 037	10	6F	AL OR STEEL	16.17	15.66	23	9.5	-	14.3	20	-	1
11 XL 037	11	6F		17.79	17.28	23	9.5	-	14.3	20	-	1
12 XL 037	12	6F		19.40	18.90	25	10	-	14.3	20	-	2
13 XL 037	13	6F		21.02	20.51	25	10	-	14.3	20	-	2
14 XL 037	14	6F		22.64	22.13	28	15	-	14.3	20	-	4
15 XL 037	15	6F		24.26	23.75	28	15	-	14.3	20	-	4
16 XL 037	16	6F		25.87	25.36	32	16	-	14.3	20	-	6
17 XL 037	17	6F		27.49	26.98	32	20	-	14.3	20	-	6
18 XL 037	18	6F		29.11	28.60	35	20	-	14.3	20	-	7
19 XL 037	19	6F		30.72	30.22	35	20	-	14.3	22	-	7
20 XL 037	20	6F		33.34	31.83	38	24	-	14.3	22	-	9
21 XL 037	21	6F		33.96	33.45	38	24	-	14.3	22	-	9
22 XL 037	22	6F		35.57	35.07	42	25	-	14.3	22	-	13
24 XL 037	24	6F		38.81	38.30	44	30	-	14.3	22	8	12
26 XL 037	26	6F		42.04	41.53	48	30	-	14.3	22	8	11
27 XL 037	27	6F		43.66	43.15	48	34	-	14.3	22	8	11
28 XL 037	28	6F		45.28	44.77	51	34	-	14.3	22	8	16
29 XL 037	29	6F		46.89	46.39	51	34	-	14.3	22	8	16
30 XL 037	30	6F		48.51	48.00	54	38	-	14.3	22	8	18
32 XL 037	32	6F		51.74	51.24	57	38	-	14.3	25	8	20
34 XL 037	34	6		54.98	54.47	-	45	-	14.3	25	8	-
35 XL 037	35	6		56.60	56.09	-	45	-	14.3	25	8	-
36 XL 037	36	6		58.21	57.70	-	45	-	14.3	25	8	-
38 XL 037	38	6		61.45	60.94	-	45	-	14.3	25	8	-
39 XL 037	39	6		63.06	62.56	-	45	-	14.3	25	8	-
40 XL 037	40	6		64.68	64.17	-	45	-	14.3	25	8	-
41 XL 037	41	6		66.30	65.79	-	45	-	14.3	25	8	-
42 XL 037	42	6		67.91	67.41	-	45	-	14.3	25	8	-
43 XL 037	43	6		69.53	69.02	-	45	-	14.3	25	8	-
44 XL 037	44	6		71.15	70.64	-	45	-	14.3	25	8	-
45 XL 037	45	6W		72.77	72.26	-	45	61	14.3	25	10	-
46 XL 037	46	6W		74.38	73.87	-	45	61	14.3	25	10	-
47 XL 037	47	6W	76.00	75.49	-	45	61	14.3	25	10	-	
48 XL 037	48	6W	77.62	77.11	-	45	61	14.3	25	10	-	
49 XL 037	49	6W	79.23	78.73	-	45	61	14.3	25	10	-	
52 XL 037	52	6W	84.08	83.58	-	45	67	14.3	25	10	-	
56 XL 037	56	6W	90.55	90.04	-	45	80	14.3	25	10	-	
57 XL 037	57	6W	92.17	91.66	-	45	80	14.3	25	10	-	
58 XL 037	58	6W	93.79	93.28	-	45	80	14.3	25	10	-	
59 XL 037	59	6W	95.40	94.90	-	45	80	14.3	25	10	-	
60 XL 037	60	6W	97.02	96.51	-	45	80	14.3	25	10	-	
68 XL 037	68	6W	109.96	109.45	-	45	100	14.3	25	10	-	
69 XL 037	69	6W	111.57	111.07	-	45	100	14.3	25	10	-	
70 XL 037	70	6W	113.19	112.68	-	45	100	14.3	25	10	-	
71 XL 037	71	6W	114.81	114.30	-	45	100	14.3	25	10	-	
72 XL 037	72	6W	116.42	115.92	-	45	100	14.3	25	10	-	



**L 050 (9.525mm)**

规格代码 Part Code	齿数 Number of Teeth	结构 Type	材料 Mat.	Dp	De	Df	Dm	Di	F	L	d	挡板号 Flange Code
14 L 050	14	6F	STEEL	42.45	41.68	48	28	-	19	30	8	54
15 L 050	15	6F		45.48	44.72	51	34	-	19	30	8	55
16 L 050	16	6F		48.51	47.75	54	36	-	19	32	8	56
17 L 050	17	6F		51.54	50.78	57	36	-	19	32	10	57
18 L 050	18	6F		54.57	53.81	60	40	-	19	32	10	58
19 L 050	19	6F		57.61	56.84	64	40	-	19	32	10	59
20 L 050	20	6F		60.64	59.88	66	40	-	19	32	10	60
21 L 050	21	6F		63.67	62.91	70	45	-	19	32	10	61
22 L 050	22	6F		66.70	65.94	75	45	-	19	32	10	62
23 L 050	23	6F		69.73	68.97	79	55	-	19	32	10	63
24 L 050	24	6F		72.77	72.00	79	55	-	19	32	10	63
25 L 050	25	6F		75.80	75.04	83	58	-	19	32	10	64
26 L 050	26	6F		78.83	78.07	87	58	-	19	32	11	65
27 L 050	27	6F		81.86	81.10	87	58	-	19	32	11	65
28 L 050	28	6F		84.89	84.13	91	58	-	19	32	11	66
29 L 050	29	6F		87.93	87.16	93	58	-	19	32	11	67
30 L 050	30	6F		90.96	90.20	97	70	-	19	32	11	68
32 L 050	32	6F		97.02	96.26	102	70	-	19	32	11	70
33 L 050	33	6F		100.05	99.29	106	70	-	19	32	11	71
34 L 050	34	6F		103.08	102.32	112	70	-	19	32	11	70
35 L 050	35	6F		106.12	105.35	115	70	-	19	32	11	72
36 L 050	36	6F		109.15	108.39	128	70	-	19	32	11	74
40 L 050	40	6WF		121.28	120.51	131	70	100	19	32	11	78
41 L 050	41	6WF		124.31	123.55	135	70	103	19	32	11	87
42 L 050	42	6WF		127.34	126.58	142	70	106	19	32	11	80
44 L 050	44	6WF		133.40	132.64	142	70	112	19	32	11	81
45 L 050	45	6WF		136.44	135.67	150	70	115	19	32	11	81
47 L 050	47	6WF		142.50	141.74	150	70	121	19	32	11	85
48 L 050	48	6WF		145.53	144.77	-	70	124	19	32	11	85
49 L 050	49	6W		148.56	147.80	-	70	127	19	32	14	-
50 L 050	50	6W		151.60	150.83	-	70	130	19	32	14	-
52 L 050	52	6W		157.66	156.90	-	70	136	19	32	14	-
56 L 050	56	6W		169.79	169.02	-	70	149	19	32	14	-
57 L 050	57	6W		172.82	172.06	-	70	152	19	42	14	-
60 L 050	60	6W		181.91	181.15	-	75	160	19	42	14	-
65 L 050	65	6A		197.07	196.31	-	75	176	19	42	14	-
66 L 050	66	6A	200.11	199.34	-	75	179	19	42	14	-	
72 L 050	72	6A	218.30	217.53	-	75	197	19	42	14	-	
84 L 050	84	6A	254.68	253.92	-	75	233	19	42	14	-	
90 L 050	90	6A	272.87	272.11	-	75	252	19	42	14	-	
96 L 050	96	6A	291.06	290.30	-	75	269	19	42	14	-	
120 L 050	120	6A	363.83	363.07	-	75	342	19	42	14	-	



**L 075 (9.525mm)**

规格代码 Part Code	齿数 Number of Teeth	结构 Type	材料 Mat.	Dp	De	Df	Dm	Di	F	L	d	挡板号 Flange Code
10 L 075	10	6F	STEEL	30.32	29.56	37	20	-	25.4	38	8	50
11 L 075	11	6F		33.35	32.59	37	22	-	25.4	38	8	50
12 L 075	12	6F		36.38	35.62	43	24	-	25.4	38	8	52
13 L 075	13	6F		39.41	38.65	44	28	-	25.4	38	8	83
14 L 075	14	6F		42.45	41.68	48	28	-	25.4	38	11	54
15 L 075	15	6F		45.48	44.72	51	34	-	25.4	38	11	55
16 L 075	16	6F		48.51	47.75	54	36	-	25.4	38	11	56
17 L 075	17	6F		51.54	50.78	57	36	-	25.4	38	11	57
18 L 075	18	6F		54.57	53.81	60	40	-	25.4	38	11	58
19 L 075	19	6F		57.61	56.84	64	40	-	25.4	38	11	59
20 L 075	20	6F		60.64	59.88	66	40	-	25.4	38	11	60
21 L 075	21	6F		63.67	62.91	70	45	-	25.4	38	11	61
22 L 075	22	6F		66.70	65.94	75	45	-	25.4	38	11	62
23 L 075	23	6F		69.73	68.97	79	55	-	25.4	38	11	63
24 L 075	24	6F		72.77	72.00	79	55	-	25.4	38	11	63
25 L 075	25	6F		75.80	75.04	83	58	-	25.4	38	11	64
26 L 075	26	6F		78.83	78.07	87	58	-	25.4	38	11	65
27 L 075	27	6F		81.86	81.10	87	58	-	25.4	38	11	65
28 L 075	28	6F		84.89	84.13	91	58	-	25.4	38	11	66
29 L 075	29	6F		87.93	87.16	93	58	-	25.4	38	11	67
30 L 075	30	6F		90.96	90.20	97	70	-	25.4	38	11	68
32 L 075	32	6F		97.02	96.26	102	70	-	25.4	38	11	70
33 L 075	33	6F		100.05	99.29	106	70	-	25.4	38	11	71
34 L 075	34	6F		103.08	102.32	112	70	-	25.4	38	11	70
35 L 075	35	6F		106.12	105.35	115	70	-	25.4	38	11	72
36 L 075	36	6F		109.15	108.39	128	70	-	25.4	38	11	74
40 L 075	40	6WF		121.28	120.51	131	70	100	25.4	38	11	78
41 L 075	41	6WF		124.31	123.55	135	70	103	25.4	38	11	87
42 L 075	42	6WF		127.34	126.58	142	70	106	25.4	38	11	80
44 L 075	44	6WF		133.40	132.64	142	70	112	25.4	38	11	81
45 L 075	45	6WF		136.44	135.67	150	70	115	25.4	38	11	81
47 L 075	47	6WF		142.50	141.74	150	70	121	25.4	38	11	85
48 L 075	48	6WF		145.53	144.77	-	70	124	25.4	38	11	85
49 L 075	49	6W		148.56	147.80	-	70	127	25.4	38	14	-
50 L 075	50	6W		151.60	150.83	-	70	130	25.4	38	14	-
52 L 075	52	6W		157.66	156.90	-	70	136	25.4	38	14	-
56 L 075	56	6W	169.79	169.02	-	70	149	25.4	38	14	-	
57 L 075	57	6W	172.82	172.06	-	70	152	25.4	38	14	-	
60 L 075	60	6W	181.91	181.15	-	75	160	25.4	38	14	-	
65 L 075	65	6A	197.07	196.31	-	75	176	25.4	45	14	-	
66 L 075	66	6A	200.11	199.34	-	75	179	25.4	45	14	-	
72 L 075	72	6A	218.30	217.53	-	75	25.47	25.4	45	14	-	
84 L 075	84	6A	254.68	253.92	-	75	233	25.4	45	14	-	
90 L 075	90	6A	272.87	272.11	-	75	252	25.4	45	14	-	
96 L 075	96	6A	291.06	290.30	-	75	269	25.4	45	14	-	
120 L 075	120	6A	363.83	363.07	-	75	342	25.4	45	14	-	



## L 100 (9.525mm)

规格代码 Part Code	齿数 Number of Teeth	结构 Type	材料 Mat.	Dp	De	Df	Dm	Di	F	L	d	挡板号 Flange Code
10 L 100	10	6F	STEEL	30.32	29.56	37	20	-	31.8	45	8	50
11 L 100	11	6F		33.35	32.59	37	22	-	31.8	45	8	50
12 L 100	12	6F		36.38	35.62	43	24	-	31.8	45	8	52
13 L 100	13	6F		39.41	38.65	44	28	-	31.8	45	8	83
14 L 100	14	6F		42.45	41.68	48	28	-	31.8	45	11	54
15 L 100	15	6F		45.48	44.72	51	34	-	31.8	45	11	55
16 L 100	16	6F		48.51	47.75	54	36	-	31.8	45	11	56
17 L 100	17	6F		51.54	50.78	57	36	-	31.8	45	11	57
18 L 100	18	6F		54.57	53.81	60	40	-	31.8	45	11	58
19 L 100	19	6F		57.61	56.84	64	40	-	31.8	45	11	59
20 L 100	20	6F		60.64	59.88	66	40	-	31.8	45	11	60
21 L 100	21	6F		63.67	62.91	70	45	-	31.8	45	11	61
22 L 100	22	6F		66.70	65.94	75	45	-	31.8	45	11	62
23 L 100	23	6F		69.73	68.97	79	55	-	31.8	45	11	63
24 L 100	24	6F		72.77	72.00	79	55	-	31.8	45	11	63
25 L 100	25	6F		75.80	75.04	82.5	58	-	31.8	45	11	64
26 L 100	26	6F		78.83	78.07	87	58	-	31.8	45	11	65
27 L 100	27	6F		81.86	81.10	87	58	-	31.8	45	11	65
28 L 100	28	6F		84.89	84.13	91	58	-	31.8	45	11	66
29 L 100	29	6F		87.93	87.16	93	58	-	31.8	45	11	67
30 L 100	30	6F		90.96	90.20	97	70	-	31.8	45	11	68
32 L 100	32	6F		97.02	96.26	102	70	-	31.8	45	11	70
33 L 100	33	6F		100.05	99.29	106	70	-	31.8	45	11	71
34 L 100	34	6F		103.08	102.32	112	70	-	31.8	45	11	72
35 L 100	35	6F		106.12	105.35	115	70	-	31.8	45	11	72
36 L 100	36	6F		109.15	108.39	128	70	-	31.8	45	11	74
40 L 100	40	6WF		121.28	120.51	131	70	100	31.8	45	11	78
41 L 100	41	6WF		124.31	123.55	135	70	103	31.8	45	11	87
42 L 100	42	6WF		127.34	126.58	142	70	106	31.8	45	11	80
44 L 100	44	6WF		133.40	132.64	142	70	112	31.8	45	11	81
45 L 100	45	6WF		136.44	135.67	150	70	115	31.8	45	11	81
47 L 100	47	6WF		142.50	141.74	150	70	121	31.8	45	11	85
48 L 100	48	6WF		145.53	144.77	-	70	124	31.8	45	11	85
49 L 100	49	6W		148.56	147.80	-	70	127	31.8	45	14	-
50 L 100	50	6W		151.60	150.83	-	70	130	31.8	45	14	-
52 L 100	52	6W	157.66	156.90	-	70	136	31.8	45	14	-	
56 L 100	56	6W	169.79	169.02	-	70	149	31.8	45	14	-	
57 L 100	57	6W	172.82	172.06	-	70	152	31.8	45	14	-	
60 L 100	60	6W	181.91	181.15	-	75	160	31.8	45	14	-	
65 L 100	65	6A	197.07	196.31	-	75	176	31.8	50	14	-	
66 L 100	66	6A	200.11	199.34	-	75	179	31.8	50	14	-	
72 L 100	72	6A	218.30	217.53	-	75	197	31.8	50	14	-	
84 L 100	84	6A	254.68	253.92	-	75	233	31.8	50	14	-	
90 L 100	90	6A	272.87	272.11	-	75	252	31.8	50	14	-	
96 L 100	96	6A	291.06	290.30	-	75	269	31.8	50	14	-	
120 L 100	120	6A	363.83	363.07	-	75	342	31.8	50	14	-	

## H 075 (12.700mm)

规格代码 Part Code	齿 数 Number of Teeth	结构 Type	材料 Mat.	Dp	De	Df	Dm	Di	F	L	d	挡板号 Flange Code	
14 H 075	14	6F	STEEL	56.60	55.22	64	40	-	26.4	40	8	59	
15 H 075	15	6F		60.64	59.27	66	45	-	26.4	40	8	60	
16 H 075	16	6F		64.68	63.31	70	45	-	26.4	40	8	61	
17 H 075	17	6F		68.72	67.35	75	45	-	26.4	40	8	62	
18 H 075	18	6F		72.77	71.39	79	55	-	26.4	40	11	63	
19 H 075	19	6F		76.81	75.44	83	60	-	26.4	40	11	64	
20 H 075	20	6F		80.85	79.48	87	62	-	26.4	40	11	65	
21 H 075	21	6F		84.89	83.52	91	65	-	26.4	40	11	66	
22 H 075	22	6F		88.94	87.56	93	68	-	26.4	40	11	67	
23 H 075	23	6F		92.98	91.61	97	72	-	26.4	40	11	68	
24 H 075	24	6F		97.02	95.65	102	72	-	26.4	40	11	70	
25 H 075	25	6F		101.06	99.69	106	72	-	26.4	40	11	71	
26 H 075	26	6F		105.11	103.73	112	80	-	26.4	40	11	72	
27 H 075	27	6F		109.15	107.78	115	80	-	26.4	40	11	74	
28 H 075	28	6F		113.19	111.82	120	80	-	26.4	40	11	75	
29 H 075	29	6F		117.23	115.86	123	80	-	26.4	40	11	78	
30 H 075	30	6F		121.28	119.90	128	80	-	26.4	40	11	78	
32 H 075	32	6F		129.36	127.99	135	80	-	26.4	40	11	80	
33 H 075	33	6F		133.40	132.03	140	80	-	26.4	40	11	81	
34 H 075	34	6F		137.45	136.07	142	80	-	26.4	40	11	81	
35 H 075	35	6F		141.49	140.12	150	80	-	26.4	40	11	85	
36 H 075	36	6F		145.53	144.16	150	80	118	26.4	40	11	86	
38 H 075	38	6F		153.62	152.24	158	80	126	26.4	40	11	90	
40 H 075	40	6F		161.70	160.33	168	80	134	26.4	40	11	90	
42 H 075	42	6F		169.79	168.41	175	80	140	26.4	40	11	94	
44 H 075	44	6WF		CAST IRON	177.87	176.50	184	80	150	26.4	40	14	95
45 H 075	45	6WF			181.91	180.54	192	80	154	26.4	40	14	96
48 H 075	48	6WF			194.04	192.67	200	90	166	26.4	45	14	100
49 H 075	49	6W	198.08		196.71	-	90	170	26.4	45	14	-	
50 H 075	50	6W	202.13		200.75	-	90	174	26.4	45	14	-	



## H 100 (12.700mm)

规格代码 Part Code	齿数 Number of Teeth	结构 Type	材料 Mat.	Dp	De	Df	Dm	Di	F	L	d	挡板号 Flange Code
14 H 100	14	6F	STEEL	56.60	55.22	64	40	-	31.8	45	11	59
15 H 100	15	6F		60.64	59.27	66	45	-	31.8	45	11	60
16 H 100	16	6F		64.68	63.31	70	45	-	31.8	45	11	61
17 H 100	17	6F		68.72	67.35	75	45	-	31.8	45	11	62
18 H 100	18	6F		72.77	71.39	79	55	-	31.8	45	14	63
19 H 100	19	6F		76.81	75.44	83	60	-	31.8	45	14	64
20 H 100	20	6F		80.85	79.48	87	62	-	31.8	45	14	65
21 H 100	21	6F		84.89	83.52	91	65	-	31.8	45	14	66
22 H 100	22	6F		88.94	87.56	93	68	-	31.8	45	14	67
23 H 100	23	6F		92.98	91.61	97	72	-	31.8	45	14	68
24 H 100	24	6F		97.02	95.65	102	72	-	31.8	45	14	70
25 H 100	25	6F		101.06	99.69	106	72	-	31.8	45	14	71
26 H 100	26	6F		105.11	103.73	112	80	-	31.8	45	14	72
27 H 100	27	6F		109.15	107.78	115	80	-	31.8	45	14	74
28 H 100	28	6F		113.19	111.82	120	80	-	31.8	45	14	75
29 H 100	29	6F		117.23	115.86	123	80	-	31.8	45	14	78
30 H 100	30	6F		121.28	119.90	128	80	-	31.8	45	14	78
32 H 100	32	6F		129.36	127.99	135	80	-	31.8	45	14	80
33 H 100	33	6F		133.40	132.03	145	80	-	31.8	45	14	81
34 H 100	34	6F		137.45	136.07	142	80	-	31.8	45	14	81
35 H 100	35	6WF		141.49	140.12	150	80	-	31.8	45	14	85
36 H 100	36	6WF		145.53	144.16	150	80	118	31.8	45	14	85
38 H 100	38	6WF		153.62	152.24	158	80	126	31.8	45	14	86
40 H 100	40	6WF		161.70	160.33	168	80	134	31.8	45	14	90
42 H 100	42	6WF		169.79	168.41	175	80	140	31.8	45	14	94
44 H 100	44	6WF		177.87	176.50	184	80	150	31.8	50	14	95
45 H 100	45	6WF		181.91	180.54	192	80	154	31.8	50	14	97
48 H 100	48	6WF		194.04	192.67	200	90	166	31.8	50	14	100
49 H 100	49	6W		198.08	196.71	-	90	170	31.8	50	19	-
50 H 100	50	6W		202.13	200.75	-	90	174	31.8	50	19	-
52 H100	52	6W		210.21	208.84	-	90	182	31.8	50	19	-
58 H100	58	6A		234.47	233.09	-	90	207	31.8	50	19	-
60 H100	60	6A		242.55	241.18	-	90	215	31.8	50	19	-
70 H100	70	6A		282.98	281.61	-	100	255	31.8	55	19	-
72 H100	72	6A		291.06	289.69	-	100	263	31.8	55	19	-
82 H100	82	6A		331.49	330.12	-	100	304	31.8	55	19	-
84 H100	84	6A		339.57	338.20	-	100	312	31.8	55	19	-
94 H100	94	6A		380.00	378.63	-	120	352	31.8	60	19	-
96 H100	96	6A	388.08	386.71	-	120	360	31.8	60	19	-	
106 H100	106	6A	428.51	427.14	-	120	401	31.8	60	19	-	
116 H100	116	6A	468.93	467.56	-	120	441	31.8	60	19	-	
118 H100	118	6A	477.02	475.65	-	120	449	31.8	60	19	-	
120 H100	120	6A	485.10	483.73	-	120	458	31.8	60	19	-	
150 H100	150	6A	606.38	605.01	-	120	579	31.8	60	19	-	
152 H100	152	6A	614.47	613.09	-	120	587	31.8	60	19	-	
154 H100	154	6A	622.55	621.18	-	120	595	31.8	60	19	-	
156 H100	156	6A	630.64	629.26	-	120	603	31.8	60	19	-	



## H 150 (12.700mm)

规格代码 Part Code	齿数 Number of Teeth	结构 Type	材料 Mat.	Dp	De	Df	Dm	Di	F	L	d	挡板号 Flange Code
14 H 150	14	6F	STEEL	56.60	55.22	64	40	-	46	58	11	59
15 H 150	15	6F		60.64	59.27	66	45	-	46	58	11	60
16 H 150	16	6F		64.68	63.31	70	45	-	46	58	11	61
17 H 150	17	6F		68.72	67.35	75	45	-	46	58	11	62
18 H 150	18	6F		72.77	71.39	79	55	-	46	58	14	63
19 H 150	19	6F		76.81	75.44	83	60	-	46	58	14	64
20 H 150	20	6F		80.85	79.48	87	62	-	46	58	14	65
21 H 150	21	6F		84.89	83.52	91	65	-	46	58	14	66
22 H 150	22	6F		88.94	87.56	93	68	-	46	58	14	67
23 H 150	23	6F		92.98	91.61	97	72	-	46	58	14	68
24 H 150	24	6F		97.02	95.65	102	72	-	46	58	14	70
25 H 150	25	6F		101.06	99.69	106	72	-	46	58	14	71
26 H 150	26	6F		105.11	103.73	112	80	-	46	58	14	72
27 H 150	27	6F		109.15	107.78	115	80	-	46	58	14	74
28 H 150	28	6F		113.19	111.82	120	80	-	46	58	14	75
29 H 150	29	6F		117.23	115.86	123	80	-	46	58	14	78
30 H 150	30	6F		121.28	119.90	128	80	-	46	58	14	78
32 H 150	32	6F		129.36	127.99	135	80	-	46	58	14	80
33 H 150	33	6F		133.40	132.03	145	80	-	46	58	14	81
34 H 150	34	6F		137.45	136.07	142	80	-	46	58	14	81
35 H 150	35	6F		141.49	140.12	150	80	-	46	58	14	85
36 H 150	36	6WF		145.53	144.16	150	80	118	46	58	14	85
38 H 150	38	6WF		153.62	152.24	158	80	126	46	58	14	86
40 H 150	40	6WF		161.70	160.33	168	80	134	46	58	14	90
42 H 150	42	6WF		169.79	168.41	175	80	140	46	58	19	94
44 H 150	44	6WF		177.87	176.50	184	80	150	46	58	19	95
45 H 150	45	6WF		181.91	180.54	192	80	154	46	58	19	97
48 H 150	48	6WF		194.04	192.67	200	90	166	46	65	19	100
49 H 150	49	6W		198.08	196.71	-	90	170	46	65	19	-
50 H 150	50	6W		202.13	200.75	-	90	174	46	65	19	-
52 H150	52	6W		210.21	208.84	-	90	182	46	65	19	-
58 H150	58	6A		234.47	233.09	-	90	207	46	65	19	-
60 H150	60	6A	242.55	241.18	-	90	215	46	65	19	-	
70 H150	70	6A	282.98	281.61	-	100	255	46	65	24	-	
72 H150	72	6A	291.06	289.69	-	100	263	46	65	24	-	
82 H150	82	6A	331.49	330.12	-	100	304	46	65	24	-	
84 H150	84	6A	339.57	338.20	-	100	312	46	65	24	-	
94 H150	94	6A	380.00	378.63	-	120	352	46	65	24	-	
96 H150	96	6A	388.08	386.71	-	120	360	46	65	24	-	
106 H150	106	6A	428.51	427.14	-	120	401	46	65	24	-	
116 H150	116	6A	468.93	467.56	-	120	441	46	65	24	-	
118 H150	118	6A	477.02	475.65	-	120	449	46	65	24	-	
120 H150	120	6A	485.10	483.73	-	120	458	46	65	24	-	
150 H150	150	6A	606.38	605.01	-	120	579	46	65	24	-	
152 H150	152	6A	614.47	613.09	-	120	587	46	65	24	-	
154 H150	154	6A	622.55	621.18	-	120	595	46	65	24	-	
156 H150	156	6A	630.64	629.26	-	120	603	46	65	24	-	



## H 200 (12.700mm)

规格代码 Part Code	齿数 Number of Teeth	结构 Type	材料 Mat.	Dp	De	Df	Dm	Di	F	L	d	挡板号 Flange Code
14 H 200	14	6F	STEEL	56.60	55.22	64	40	-	85.7	70	11	59
15 H 200	15	6F		60.64	59.27	66	45	-	58.7	70	11	60
16 H 200	16	6F		64.68	63.31	70	45	-	58.7	70	11	61
17 H 200	17	6F		68.72	67.35	75	45	-	58.7	70	11	62
18 H 200	18	6F		72.77	71.39	79	55	-	58.7	70	14	63
19 H 200	19	6F		76.81	75.44	83	60	-	58.7	70	14	64
20 H 200	20	6F		80.85	79.48	87	62	-	58.7	70	14	65
21 H 200	21	6F		84.89	83.52	91	65	-	58.7	70	14	66
22 H 200	22	6F		88.94	87.56	93	68	-	58.7	70	14	67
23 H 200	23	6F		92.98	91.61	97	72	-	58.7	70	14	68
24 H 200	24	6F		97.02	95.65	102	72	-	58.7	70	14	70
25 H 200	25	6F		101.06	99.69	106	72	-	58.7	70	14	71
26 H 200	26	6F		105.11	103.73	112	80	-	58.7	70	14	72
27 H 200	27	6F		109.15	107.78	115	80	-	58.7	70	14	74
28 H 200	28	6F		113.19	111.82	120	80	-	58.7	70	14	75
29 H 200	29	6F		117.23	115.86	123	80	-	58.7	70	14	78
30 H 200	30	6F		121.28	119.90	128	80	-	58.7	70	14	78
32 H 200	32	6F		129.36	127.99	135	80	-	58.7	70	14	80
33 H 200	33	6F		133.40	132.03	145	80	-	58.7	70	14	81
34 H 200	34	6F		137.45	136.07	142	80	-	58.7	70	14	81
35 H 200	35	6F		141.49	140.12	150	80	-	58.7	70	14	85
36 H 200	36	6WF		145.53	144.16	150	80	118	58.7	70	14	85
38 H 200	38	6WF		153.62	152.24	158	80	126	58.7	70	14	86
40 H 200	40	6WF		161.70	160.33	168	80	134	58.7	70	14	90
42 H 200	42	6WF		169.79	168.41	175	80	140	58.7	70	19	94
44 H 200	44	6WF		177.87	176.50	184	80	150	58.7	70	19	95
45 H 200	45	6WF		181.91	180.54	192	80	154	58.7	70	19	96
48 H 200	48	6WF		194.04	192.67	200	90	166	58.7	75	24	100
49 H 200	49	6W		198.08	196.71	-	90	170	58.7	75	24	-
50 H 200	50	6W		202.13	200.75	-	90	174	58.7	75	24	-
52 H150	52	6W		210.21	208.84	-	90	182	58.7	75	24	-
58 H200	58	6A		234.47	233.09	-	90	207	58.7	75	24	-
60 H200	60	6A		242.55	241.18	-	90	215	58.7	75	24	-
70 H200	70	6A		282.98	281.61	-	100	255	58.7	75	28	-
72 H200	72	6A		291.06	289.69	-	100	263	58.7	75	28	-
82 H200	82	6A	331.49	330.12	-	100	304	58.7	75	28	-	
84 H200	84	6A	339.57	338.20	-	100	312	58.7	75	28	-	
94 H200	94	6A	380.00	378.63	-	120	352	58.7	75	28	-	
96 H200	96	6A	388.08	386.71	-	120	360	58.7	75	28	-	
106 H200	106	6A	428.51	427.14	-	120	401	58.7	75	28	-	
116 H200	116	6A	468.93	467.56	-	120	441	58.7	75	28	-	
118 H200	118	6A	477.02	475.65	-	120	449	58.7	75	28	-	
120 H200	120	6A	485.10	483.73	-	120	458	58.7	75	28	-	
150 H200	150	6A	606.38	605.01	-	120	579	58.7	75	28	-	
152 H200	152	6A	614.47	613.09	-	120	587	58.7	75	28	-	
154 H200	154	6A	622.55	621.18	-	120	595	58.7	75	28	-	
156 H200	156	6A	630.64	629.26	-	120	603	58.7	75	28	-	



### H 300 (12.700mm)

规格代码 Part Code	齿数 Number of Teeth	结构 Type	材料 Mat.	Dp	De	Df	Dm	Di	F	L	d	挡板号 Flange Code
14 H 300	14	6F	STEEL	56.60	55.22	64	40	-	85.7	100	11	59
15 H 300	15	6F		60.64	59.27	66	45	-	85.7	100	11	60
16 H 300	16	6F		64.68	63.31	70	45	-	85.7	100	11	61
17 H 300	17	6F		68.72	67.35	75	45	-	85.7	100	11	62
18 H 300	18	6F		72.77	71.39	79	55	-	85.7	100	19	63
19 H 300	19	6F		76.81	75.44	83	60	-	85.7	100	19	64
20 H 300	20	6F		80.85	79.48	87	62	-	85.7	100	19	65
21 H 300	21	6F		84.89	83.52	91	65	-	85.7	100	19	66
22 H 300	22	6F		88.94	87.56	93	68	-	85.7	100	19	67
23 H 300	23	6F		92.98	91.61	97	72	-	85.7	100	19	68
24 H 300	24	6F		97.02	95.65	102	72	-	85.7	100	19	70
25 H 300	25	6F		101.06	99.69	106	72	-	85.7	100	19	71
26 H 300	26	6F		105.11	103.73	112	80	-	85.7	100	19	72
27 H 300	27	6F		109.15	107.78	115	80	-	85.7	100	19	74
28 H 300	28	6F		113.19	111.82	120	80	-	85.7	100	19	75
29 H 300	29	6F		117.23	115.86	123	80	-	85.7	100	19	78
30 H 300	30	6F		121.28	119.90	128	80	-	85.7	100	19	78
32 H 300	32	6F		129.36	127.99	135	80	-	85.7	100	19	80
33 H 300	33	6F		133.40	132.03	145	80	-	85.7	100	19	81
34 H 300	34	6F		137.45	136.07	142	80	-	85.7	100	19	81
35 H 300	35	6F		141.49	140.12	150	80	-	85.7	100	19	85
36 H 300	36	6WF		145.53	144.16	150	80	118	85.7	100	19	85
38 H 300	38	6WF		153.62	152.24	158	80	126	85.7	100	19	86
40 H 300	40	6WF		161.70	160.33	168	80	134	85.7	100	19	90
42 H 300	42	6WF		169.79	168.41	175	80	140	85.7	100	24	94
44 H 300	44	6WF		177.87	176.50	184	80	150	85.7	100	24	95
45 H 300	45	6WF		181.91	180.54	192	80	154	85.7	100	24	96
48 H 300	48	6WF		194.04	192.67	200	90	166	85.7	100	24	100
49 H 300	49	6W		198.08	196.71	-	90	170	85.7	100	24	-
50 H 300	50	6W		202.13	200.75	-	90	174	85.7	100	24	-
52 H 300	52	6W		210.21	208.84	-	90	182	85.7	100	24	-
58 H 300	58	6A		234.47	233.09	-	90	207	85.7	100	24	-
60 H 300	60	6A		242.55	241.18	-	90	215	85.7	100	28	-
70 H 300	70	6A		282.98	281.61	-	100	255	85.7	100	28	-
72 H 300	72	6A		291.06	289.69	-	100	263	85.7	100	28	-
82 H 300	82	6A	331.49	330.12	-	100	304	85.7	100	28	-	
84 H 300	84	6A	339.57	338.20	-	100	312	85.7	100	28	-	
94 H 300	94	6A	380.00	378.63	-	120	352	85.7	100	28	-	
96 H 300	96	6A	388.08	386.71	-	120	360	85.7	100	28	-	
106 H 300	106	6A	428.51	427.14	-	120	401	85.7	100	28	-	
116 H 300	116	6A	468.93	467.56	-	120	441	85.7	100	28	-	
118 H 300	118	6A	477.02	475.65	-	120	449	85.7	100	28	-	
120 H 300	120	6A	485.10	483.73	-	120	458	85.7	100	28	-	
150 H 300	150	6A	606.38	605.01	-	120	579	85.7	100	28	-	
152 H 300	152	6A	614.47	613.09	-	120	587	85.7	100	28	-	
154 H 300	154	6A	622.55	621.18	-	120	595	85.7	100	28	-	
156 H 300	156	6A	630.64	629.26	-	120	603	85.7	100	28	-	



### L 050 (9.525mm)

规格代码 Part Code	齿数 Number of Teeth	结构 Type	材料 Mat.	锥孔号 Bush Number	Dp	De	Df	Dm	Di	F	S	R	挡板号 Flange Code	
TL18L050	18	8F	STEEL	1108	54.57	53.81	60	45	-	19	22	3	58	
TL19L050	19	8F		1108	57.61	56.84	64	45	-	19	22	3	59	
TL20L050	20	8F		1108	60.64	59.88	66.5	48	-	19	22	3	60	
TL21L050	21	8F		1108	63.67	62.91	70	48	-	19	22	3	61	
TL22L050	22	8F		1108	66.70	65.94	75	51	-	19	22	3	62	
TL23L050	23	8F		1108	69.73	68.97	79	54	-	19	22	3	63	
TL24L050	24	8F		1108	72.77	72.00	79	54	-	19	22	3	63	
TL25L050	25	8F		1108	75.80	75.04	82.5	56	-	19	22	3	64	
TL26L050	26	8F		1108	78.83	78.07	86	60	-	19	22	3	65	
TL27L050	27	8F		1108	81.86	81.10	86	62	-	19	22	3	65	
TL28L050	28	8F		1108	84.89	84.13	91	65	-	19	22	3	66	
TL30L050	30	8F		1108	90.96	90.20	97	70	-	19	22	3	68	
TL32L050	32	8F		1108	97.02	96.26	102	74	-	19	22	3	70	
TL36L050	36	8F		1108	109.15	108.39	115	85	-	19	22	3	74	
TL40L050	40	8F		1610	121.28	120.51	128	88	-	19	25	6	78	
TL44L050	44	8WF		1610	133.40	132.64	142	88	110	19	25	6	81	
TL48L050	48	8WF		1610	145.53	144.77	150	88	120	19	25	6	85	
TL60L050	60	7W		1610	181.91	181.15	-	92	166	19	25	3	-	
TL72L050	72	7A		CAST IRON	1610	218.30	217.53	-	92	202	19	25	3	-
TL84L050	84	7A			1610	254.68	253.90	-	92	236	19	25	3	-
TL96L050	96	7A	2012		291.06	290.30	-	106	270	19	32	6.5	-	
TL120L050	120	7A	2012		363.83	363.07	-	106	343	19	32	6.5	-	

### L 075 (9.525mm)

规格代码 Part Code	齿数 Number of Teeth	结构 Type	材料 Mat.	锥孔号 Bush Number	Dp	De	Df	Dm	Di	F	S	R	挡板号 Flange Code	
TL18L075	18	3F	STEEL	1108	54.57	53.81	60	-	-	25	25	-	58	
TL19L075	19	3F		1108	57.61	56.84	64	-	-	25	25	-	59	
TL20L075	20	3F		1108	60.64	59.88	66.5	-	-	25	25	-	60	
TL21L075	21	3F		1108	63.67	62.91	70	-	-	25	25	-	61	
TL22L075	22	3F		1108	66.70	65.94	75	-	-	25	25	-	62	
TL23L075	23	3F		1108	69.73	68.97	79	-	-	25	25	-	63	
TL24L075	24	3F		1108	72.77	72.00	79	-	-	25	25	-	63	
TL25L075	25	3F		1108	75.80	75.04	82.5	-	-	25	25	-	64	
TL26L075	26	3F		1108	78.83	78.07	86	-	-	25	25	-	65	
TL27L075	27	3F		1108	81.86	81.10	86	-	-	25	25	-	65	
TL28L075	28	3F		1108	84.89	84.13	91	-	-	25	25	-	66	
TL30L075	30	3F		1108	90.96	90.20	97	-	-	25	25	-	68	
TL32L075	32	3F		1108	97.02	96.26	102	-	-	25	25	-	70	
TL36L075	36	3F		1610	109.15	108.39	115	-	-	25	25	-	74	
TL40L075	40	3F		1610	121.28	120.51	128	-	-	25	25	-	78	
TL44L075	44	3WF		1610	133.40	132.64	142	90	110	25	25	-	81	
TL48L075	48	3WF		1610	145.53	144.77	150	92	120	25	25	-	85	
TL60L075	60	3W		1610	181.91	181.15	-	92	166	25	25	-	-	
TL72L075	72	3A		CAST IRON	1610	218.30	217.53	-	92	202	25	25	-	-
TL84L075	84	7A			2012	254.68	253.90	-	92	236	25	25	3.5	-
TL96L075	96	7A	2012		291.06	290.30	-	106	270	25	32	3.5	-	
TL120L075	120	7A	2012		363.83	363.07	-	106	343	25	32	3.5	-	



### L 100 (9.525mm)

规格代码 Part Code	齿数 Number of Teeth	结构 Type	材料 Mat.	锥孔号 Bush Number	Dp	De	Df	Dm	Di	F	S	R	挡板号 Flange Code	
TL18L100	18	5F	STEEL	1108	54.57	53.81	60	-	38	31	22	9	58	
TL19L100	19	5F		1108	57.61	56.84	64	-	38	31	22	9	59	
TL20L100	20	5F		1108	60.64	59.88	66.5	-	45	31	22	9	60	
TL21L100	21	5F		1108	63.67	62.91	70	-	45	31	22	9	61	
TL22L100	22	5F		1108	66.70	65.94	75	-	48	31	22	9	62	
TL23L100	23	5F		1108	69.73	68.97	79	-	52	32	22	10	63	
TL24L100	24	5F		1108	72.77	72.00	79	-	52	32	22	10	63	
TL25L100	25	5F		1108	75.80	75.04	82.5	-	54	32	22	10	64	
TL26L100	26	5F		1108	78.83	78.07	86	-	60	32	22	10	65	
TL27L100	27	5F		1108	81.86	81.10	86	-	60	32	22	10	65	
TL28L100	28	5F		1108	84.89	84.13	91	-	65	32	22	10	66	
TL30L100	30	5F		1210	90.96	90.20	97	-	71	32	25	7	68	
TL32L100	32	5F		1210	97.02	96.26	102	-	75	32	25	7	70	
TL36L100	36	5F		1610	109.15	108.39	115	-	86	32	25	7	74	
TL40L100	40	5F		1610	121.28	120.51	128	-	96	32	25	7	78	
TL44L100	44	5WF		1610	133.40	132.64	142	90	110	32	25	7	81	
TL48L100	48	5WF		1610	145.53	144.77	150	92	120	32	25	7	85	
TL60L100	60	9W		1610	181.91	181.15	-	92	166	32	25	3.5	-	
TL72L100	72	3A		CAST IRON	2012	218.30	217.53	-	92	202	32	32	0	-
TL84L100	84	3A			2012	254.68	253.90	-	92	236	32	32	0	-
TL96L100	96	3A	2012		291.06	290.30	-	106	270	32	32	0	-	
TL120L100	120	3A	2012		363.83	363.07	-	106	343	32	32	0	-	

### H 100 (12.700mm)

规格代码 Part Code	齿数 Number of Teeth	结构 Type	材料 Mat.	锥孔号 Bush Number	Dp	De	Df	Dm	Di	F	S	R	挡板号 Flange Code	
TL16H100	16	5F	STEEL	1108	64.68	63.31	70	-	45	31	22	9	61	
TL18H100	18	5F		1210	72.77	71.39	79	-	52	31	25	6	63	
TL19H100	19	5F		1210	76.81	75.44	82.5	-	56	31	25	6	64	
TL20H100	20	5F		1210	80.85	79.48	87	-	60	31	25	6	76	
TL21H100	21	5F		1210	84.89	83.52	91	-	64	32	25	7	66	
TL22H100	22	5F		1210	88.94	87.56	94	-	67	32	25	7	67	
TL23H100	23	5F		1610	92.98	91.61	97	-	70	32	25	7	68	
TL24H100	24	5F		1610	97.02	95.65	102	-	74	32	25	7	70	
TL25H100	25	5F		1610	101.06	99.69	106	-	77	32	25	7	71	
TL26H100	26	5F		1610	105.11	103.73	112	-	82	32	25	7	72	
TL27H100	27	5F		1610	109.15	107.78	115	-	85	32	25	7	74	
TL28H100	28	5F		1610	113.19	111.82	120	-	90	32	25	7	75	
TL30H100	30	5F		1610	121.28	111.90	128	-	98	32	25	7	78	
TL32H100	32	5WF		1610	129.36	127.99	135	80	106	32	25	7	80	
TL36H100	36	5WF		1610	145.53	144.16	150	92	121	32	25	7	85	
TL40H100	40	5WF		1610	161.70	160.33	168	92	138	32	25	7	90	
TL44H100	44	3WF		2012	177.87	176.50	184	106	152	32	32	0	95	
TL48H100	48	3WF		2012	194.04	192.67	200	106	169	32	32	0	100	
TL60H100	60	9A		CAST IRON	2012	242.55	241.18	-	92	223	34	32	1	-
TL72H100	72	9A			2012	291.06	289.69	-	92	270	34	32	1	-
TL84H100	84	9A	2012		339.57	338.20	-	92	318	34	32	1	-	
TL96H100	96	7A	2517		388.08	386.71	-	106	366	34	45	5.5	-	
TL120H100	120	7A	2517		485.10	483.73	-	106	462	34	45	5.5	-	



## H 150 (12.700mm)

规格代码 Part Code	齿数 Number of Teeth	结构 Type	材料 Mat.	锥孔号 Bush Number	Dp	De	Df	Dm	Di	F	S	R	挡板号 Flange Code
TL18H150	18	5F	STEEL	1210	72.77	71.39	79	-	52	45	25	20	63
TL19H150	19	5F		1210	76.81	75.44	82.5	-	56	45	25	20	64
TL20H150	20	5F		1210	80.85	79.48	87	-	60	45	25	20	76
TL21H150	21	5F		1210	84.89	83.52	91	-	64	45	25	20	66
TL22H150	22	5F		1210	88.94	87.56	94	*	67	45	25	20	67
TL23H150	23	5F		1610	92.98	91.61	97	-	70	45	25	20	68
TL24H150	24	5F		1610	97.02	95.65	102	-	74	45	25	20	70
TL25H150	25	5F		1610	101.06	99.69	106	-	77	45	25	20	71
TL26H150	26	5F		1610	105.11	103.73	112	-	82	45	25	20	72
TL27H150	27	5F		1610	109.15	107.78	115	-	85	45	25	20	74
TL28H150	28	5F		1610	113.19	111.82	120	-	90	45	25	20	75
TL30H150	30	5F		1610	121.28	111.90	128	-	98	45	25	20	78
TL32H150	32	5WF		1610	129.36	127.99	135	80	106	45	25	20	80
TL36H150	36	5WF		1610	145.53	144.16	150	92	121	45	25	20	85
TL40H150	40	5WF		1610	161.70	160.33	168	92	138	45	25	20	90
TL44H150	44	5WF		2012	177.87	176.50	184	106	152	45	32	13	95
TL48H150	48	5WF		2012	194.04	192.67	200	106	169	45	32	13	100
TL60H150	60	9A		CAST IRON	2012	242.55	241.18	-	92	223	46	32	7.5
TL72H150	72	9A	2012		291.06	289.69	-	92	270	46	32	7.5	-
TL84H150	84	9A	2012		339.57	338.20	-	92	318	46	32	7.5	-
TL96H150	96	9A	2517		388.08	386.71	-	106	366	46	45	0.5	-
TL120H150	120	9A	2517		485.10	483.73	-	106	462	46	45	0.5	-

## H 200 (12.700mm)

规格代码 Part Code	齿数 Number of Teeth	结构 Type	材料 Mat.	锥孔号 Bush Number	Dp	De	Df	Dm	Di	F	S	R	挡板号 Flange Code
TL18H200	18	5F	STEEL	1210	72.77	71.39	79	-	52	58	25	33	63
TL19H200	19	5F		1210	76.81	75.44	82.5	-	56	58	25	33	64
TL20H200	20	5F		1610	80.85	79.48	87	*	60	58	25	33	76
TL21H200	21	5F		1610	84.89	83.52	91	-	64	58	25	33	66
TL22H200	22	5F		1610	88.94	87.56	94	-	67	58	25	33	67
TL23H200	23	5F		1610	92.98	91.61	97	-	70	58	25	33	68
TL24H200	24	5F		1610	97.02	95.65	102	-	74	58	25	33	70
TL25H200	25	5F		1610	101.06	99.69	106	-	77	58	25	33	71
TL26H200	26	5F		1610	105.11	103.73	112	-	82	58	25	33	72
TL27H200	27	5F		1610	109.15	107.78	115	-	85	58	25	33	74
TL28H200	28	5F		1610	113.19	111.82	120	-	90	58	25	33	75
TL30H200	30	5F		1610	121.28	111.90	128	-	98	58	25	33	78
TL32H200	32	5F		2012	129.36	127.99	135	-	106	58	32	26	80
TL36H200	36	5WF		2012	145.53	144.16	150	102	121	58	32	26	85
TL40H200	40	5WF		2012	161.70	160.33	168	106	138	58	32	26	90
TL44H200	44	5WF		2012	177.87	176.50	184	106	152	58	32	26	95
TL48H200	48	5WF		2517	194.04	192.67	200	119	169	58	45	13	100
TL60H200	60	9A		CAST IRON	2517	242.55	241.18	-	119	223	60	45	7.5
TL72H200	72	9A	2517		291.06	289.69	-	119	270	60	45	7.5	-
TL84H200	84	9A	2517		339.57	338.20	-	119	318	60	45	7.5	-
TL96H200	96	9A	2517		388.08	386.71	-	119	366	60	45	7.5	-
TL120H200	120	9A	2517		485.10	483.73	-	119	462	60	45	7.5	-



## H 300 (12.700mm)

规格代码 Part Code	齿数 Number of Teeth	结构 Type	材料 Mat.	锥孔号 Bush Number	Dp	De	Df	Dm	Di	F	S	R	挡板号 Flange Code
TL20H300	20	4F	STEEL	1615	80.85	79.48	87	-	60	84	38	23	76
TL21H300	21	4F		1615	84.89	83.52	91	-	64	84	38	23	66
TL22H300	22	4F		1615	88.94	87.56	94	-	67	84	38	23	67
TL23H300	23	4F		1615	92.98	91.61	97	-	70	84	38	23	68
TL24H300	24	4F		1615	97.02	95.65	102	-	74	84	38	23	70
TL25H300	25	4F		2010	101.06	99.69	106	-	77	84	38	23	71
TL26H300	26	4F		2010	105.11	103.73	112	-	82	84	38	23	72
TL27H300	27	4F		2010	109.15	107.78	115	-	85	84	32	26	74
TL28H300	28	4F		2517	113.19	111.82	120	-	90	84	32	26	75
TL30H300	30	4F		2517	121.28	111.91	128	-	98	84	32	26	78
TL32H300	32	4F		2517	129.36	127.99	135	-	106	84	45	19.5	80
TL36H300	36	4F		2517	145.53	144.16	150	-	121	84	45	19.5	85
TL40H300	40	4F		2517	161.70	160.33	168	-	138	84	45	19.5	90
TL44H300	44	9WF		2517	177.87	176.50	184	119	152	86	45	20.5	95
TL48H300	48	9WF		2517	194.04	192.67	200	119	169	86	45	20.5	100
TL60H300	60	9A	CAST IRON	2517	242.55	241.18	-	119	223	86	45	20.5	-
TL72H300	72	9A		2517	291.06	289.69	-	119	270	86	45	20.5	-
TL84H300	84	9A		2517	339.57	338.20	-	119	318	86	45	20.5	-
TL96H300	96	9A		3030	388.08	386.71	-	150	366	86	76	5	-
TL120H300	120	9A		3030	485.10	483.73	-	150	462	86	76	5	-

## XH 200 (22.225mm)

规格代码 Part Code	齿数 Number of Teeth	结构 Type	材料 Mat.	锥孔号 Bush Number	Dp	De	Df	Dm	Di	F	S	R	挡板号 Flange Code
TL18XH200	18	5F	STEEL	2517	127.34	124.55	140	-	95	64	45	19	155
TL20XH200	20	5F		2517	141.49	138.69	155	-	110	64	45	19	157
TL22XH200	22	5F		2517	155.64	152.84	170	-	120	64	45	19	159
TL24XH200	24	5F		2517	169.79	166.99	184	-	135	64	45	19	161
TL26XH200	26	5F		2517	183.94	181.14	198	-	150	64	45	19	163
TL28XH200	28	9WF		3020	198.08	195.29	212	120	165	64	45	9.5	165
TL30XH200	30	9WF		3020	212.23	209.44	227	120	180	64	45	9.5	167
TL32XH200	32	9WF		3020	226.38	223.59	240	120	195	64	45	9.5	169
TL40XH200	40	9WF		3020	282.98	280.18	297	160	245	64	51	9.5	177
TL48XH200	48	9W		3020	339.57	336.78	-	160	300	64	51	6.5	-
TL60XH200	60	7A	CAST IRON	3535	424.47	421.67	-	190	385	64	89	12.5	-
TL72XH200	72	7A		3535	509.36	506.56	-	190	470	64	89	12.5	-
TL84XH200	84	7A		4040	594.25	591.46	-	190	555	64	89	12.5	-
TL96XH200	96	7A		4040	679.15	676.35	-	190	640	64	89	12.5	-
TL120XH200	120	7A		4040	848.93	846.14	-	190	810	64	89	12.5	-



## XH 300 (22.225mm)

规格代码 Part Code	齿数 Number of Teeth	结构 Type	材料 Mat.	锥孔号 Bush Number	Dp	De	Df	Dm	Di	F	S	R	挡板号 Flange Code
TL18XH300	18	5F	STEEL	2517	127.34	124.55	140	-	95	64	45	19	155
TL20XH300	20	5F		2517	141.49	138.69	155	-	110	64	45	19	157
TL22XH300	22	5F		2517	155.64	152.84	170	-	120	64	45	19	159
TL24XH300	24	5F		2517	169.79	166.99	184	-	135	64	45	19	161
TL26XH300	26	5F		2517	183.94	181.14	198	-	150	64	45	19	163
TL28XH300	28	5F		2517	198.08	195.29	212	120	165	64	45	9.5	165
TL30XH300	30	5F		2517	212.23	209.44	227	120	180	64	45	9.5	167
TL32XH300	32	5F		2517	226.38	223.59	240	120	195	64	45	9.5	169
TL40XH300	40	9WF		3020	282.98	280.18	297	160	245	64	51	9.5	177
TL48XH300	48	9A		CAST IRON	3020	339.57	336.78	-	160	300	64	51	6.5
TL60XH300	60	9A	3535		424.47	421.67	-	190	385	64	89	12.5	-
TL72XH300	72	9A	3535		509.36	506.56	-	190	470	64	89	12.5	-
TL84XH300	84	7A	3535		594.25	591.46	-	190	555	64	89	12.5	-
TL96XH300	96	7A	3535		679.15	676.35	-	190	640	64	89	12.5	-
TL120XH300	120	7A	3535		848.93	846.14	-	190	810	64	89	12.5	-

## XH 400 (22.225mm)

规格代码 Part Code	齿数 Number of Teeth	结构 Type	材料 Mat.	锥孔号 Bush Number	Dp	De	Df	Dm	Di	F	S	R	挡板号 Flange Code
TL18XH400	18	5F	STEEL	2517	127.34	124.55	140	-	95	64	45	19	155
TL20XH400	20	5F		2517	141.49	138.69	155	-	110	64	45	19	157
TL22XH400	22	5F		2517	155.64	152.84	170	-	120	64	45	19	159
TL24XH400	24	5F		3020	169.79	166.99	184	-	135	64	45	19	161
TL26XH400	26	5F		3020	183.94	181.14	198	-	150	64	45	19	163
TL28XH400	28	5F		3020	198.08	195.29	212	120	165	64	45	9.5	165
TL30XH400	30	5F		3020	212.23	209.44	227	120	180	64	45	9.5	167
TL32XH400	32	5F		3020	226.38	223.59	240	120	195	64	45	9.5	169
TL40XH400	40	9WF		3535	282.98	280.18	297	160	245	64	51	9.5	177
TL48XH400	48	9W		CAST IRON	3535	339.57	336.78	-	160	300	64	51	6.5
TL60XH400	60	9A	4040		424.47	421.67	-	190	385	64	89	12.5	-
TL72XH400	72	9A	4040		509.36	506.56	-	190	470	64	89	12.5	-
TL84XH400	84	9A	4040		594.25	591.46	-	190	555	64	89	12.5	-
TL96XH400	96	9A	4040		679.15	676.35	-	190	640	64	89	12.5	-
TL120XH400	120	9A	4040		848.93	846.14	-	190	810	64	89	12.5	-



## T 2.5 (Pitch=2.5mm) for belt width 6 mm

规格代码 Part Code	齿数 Number of Teeth	结构 Type	材料 Mat.	Dp	De	Df	Dm	F	L	d	挡板号 Flange Code
12T2.5-16	12	1F	AL	9.60	9.00	13	13	9	16	-	501
14T2.5-16	14	1F		11.20	10.60	15	15	9	16	-	502
15T2.5-16	15	1F		12.00	11.40	15	15	9	16	-	502
16T2.5-16	16	1F		12.80	12.20	16	16	9	16	-	503
18T2.5-16	18	6F		14.40	13.80	17.5	10	10	16	-	504
19T2.5-16	19	6F		15.20	14.60	20	10	10	16	-	505
20T2.5-16	20	6F		16.00	15.40	20	11	10	16	-	505
22T2.5-16	22	6F		16.60	17.00	22	11	10	16	-	512
24T2.5-16	24	6F		19.15	18.55	22	12	10	16	-	512
25T2.5-16	25	6F		19.95	19.35	23	13	10	16	-	506
26T2.5-16	26	6F		20.75	20.15	25	14	10	16	-	507
28T2.5-16	28	6F		22.35	21.75	25	14	10	16	-	507
30T2.5-16	30	6F		23.95	23.35	28	16	10	16	-	508
32T2.5-16	32	6F		25.95	24.95	32	16	10	16	-	509
36T2.5-16	36	6F		28.75	28.10	36	20	10	16	-	510
40T2.5-16	40	6F		31.90	31.30	38	22	10	16	-	511
44T2.5-16	44	6F		35.10	34.50	42	24	10	16	-	513
48T2.5-16	48	6		38.30	37.70	-	26	10	16	-	-
60T2.5-16	60	6		47.85	47.25	-	34	10	16	8	-

## T 5 (Pitch=5mm) for belt width 10 mm

规格代码 Part Code	齿数 Number of Teeth	结构 Type	材料 Mat.	Dp	De	Df	Dm	F	L	d	挡板号 Flange Code
10T5-21	10	6F	AL	16.05	15.05	19.5	8	15	21	-	3
12T5-21	12	6F		19.25	18.25	23	11	15	21	-	1
14T5-21	14	6F		22.45	21.45	25	13	15	21	-	2
15T5-21	15	6F		24.05	23.05	28	16	15	21	-	4
16T5-21	16	6F		25.60	24.60	32	18	15	21	-	5
18T5-21	18	6F		28.80	27.80	32	10	15	21	-	6
19T5-21	19	6F		30.40	29.40	36	20	15	21	-	8
20T5-21	20	6F		32.00	31.00	36	22	15	21	-	8
22T5-21	22	6F		32.15	34.15	38	23	15	21	-	9
24T5-21	24	6F		38.40	37.40	42	24	15	21	-	13
25T5-21	25	6F		39.95	38.95	44	26	15	21	-	12
26T5-21	26	6F		41.60	40.60	44	26	15	21	-	12
27T5-21	27	6F		43.20	42.20	48	30	15	21	8	11
28T5-21	28	6F		44.75	43.75	48	32	15	21	8	11
30T5-21	30	6F		47.95	46.95	51	34	15	21	8	16
32T5-21	32	6F		51.10	50.10	54	38	15	21	8	18
36T5-21	36	6F		57.45	56.45	64	38	15	21	8	23
40T5-21	40	6F		63.85	62.85	67	40	15	21	8	24
42T5-21	42	6F		67.00	66.00	70	40	15	21	8	26
44T5-21	44	6		70.20	69.20	-	45	15	21	8	-
48T5-21	48	6	76.55	75.55	-	50	15	21	8	-	
60T5-21	60	6	95.65	94.65	-	65	15	21	8	-	



## T 5 (Pitch=5mm) for belt width 16 mm

规格代码 Part Code	齿数 Number of Teeth	结构 Type	材料 Mat.	Dp	De	Df	Dm	F	L	d	挡板号 Flange Code
10T5-27	10	6F	AL	16.05	15.05	19.5	8	21	27	-	3
12T5-27	12	6F		19.25	18.25	23	11	21	27	-	1
14T5-27	14	6F		22.45	21.45	25	13	21	27	-	2
15T5-27	15	6F		24.05	23.05	28	16	21	27	-	4
16T5-27	16	6F		25.60	24.60	32	18	21	27	-	5
18T5-27	18	6F		28.80	27.80	32	10	21	27	-	6
19T5-27	19	6F		30.40	29.40	36	20	21	27	-	8
20T5-27	20	6F		32.00	31.00	36	22	21	27	-	8
22T5-27	22	6F		35.15	34.15	38	23	21	27	-	9
24T5-27	24	6F		38.40	37.40	42	24	21	27	-	13
25T5-27	25	6F		39.95	38.95	44	26	21	27	-	12
26T5-27	26	6F		41.60	40.60	44	26	21	27	-	12
27T5-27	27	6F		43.20	42.20	48	30	21	27	8	11
28T5-27	28	6F		44.75	43.75	48	32	21	27	8	11
30T5-27	30	6F		47.95	46.95	51	34	21	27	8	16
32T5-27	32	6F		51.10	50.10	54	38	21	27	8	18
36T5-27	36	6F		57.45	56.45	64	38	21	27	8	23
40T5-27	40	6F		63.85	62.85	67	40	21	27	8	24
42T5-27	42	6F		67.00	66.00	70	40	21	27	8	26
44T5-27	44	6		70.20	69.20	-	45	21	27	8	-
48T5-27	48	6	76.55	75.55	-	50	21	27	8	-	
60T5-27	60	6	95.65	94.65	-	65	21	27	8	-	

## T 5 (Pitch=5mm) for belt width 25 mm

规格代码 Part Code	齿数 Number of Teeth	结构 Type	材料 Mat.	Dp	De	Df	Dm	F	L	d	挡板号 Flange Code
10T5-36	10	6F	AL	16.05	15.05	19.5	8	30	36	-	3
12T5-36	12	6F		19.25	18.25	23	11	30	36	-	1
14T5-36	14	6F		22.45	21.45	25	13	30	36	-	2
15T5-36	15	6F		24.05	23.05	28	16	30	36	-	4
16T5-36	16	6F		25.60	24.60	32	18	30	36	-	5
18T5-36	18	6F		28.80	27.80	32	10	30	36	-	6
19T5-36	19	6F		30.40	29.40	36	20	30	36	-	8
20T5-36	20	6F		32.00	31.00	36	22	30	36	-	8
22T5-36	22	6F		32.15	34.15	38	23	30	36	-	9
24T5-36	24	6F		38.40	37.40	42	24	30	36	8	13
25T5-36	25	6F		39.95	38.95	44	26	30	36	8	12
26T5-36	26	6F		41.60	40.60	44	26	30	36	8	12
27T5-36	27	6F		43.20	42.20	48	30	30	36	8	11
28T5-36	28	6F		44.75	43.75	48	32	30	36	8	11
30T5-36	30	6F		47.95	46.95	51	34	30	36	8	16
32T5-36	32	6F		51.10	50.10	54	38	30	36	8	18
36T5-36	36	6F		57.45	56.45	64	38	30	36	8	23
40T5-36	40	6F		63.85	62.85	67	40	30	36	8	24
42T5-36	42	6F		67.00	66.00	70	40	30	36	8	26
44T5-36	44	6		70.20	69.20	-	45	30	36	8	-
48T5-36	48	6	76.55	75.55	-	50	30	36	8	-	
60T5-36	60	6	95.65	94.65	-	65	30	36	8	-	



## T 10 (Pitch=10mm) for belt width 16 mm

规格代码 Part Code	齿数 Number of Teeth	结构 Type	材料 Mat.	Dp	De	Df	Dm	F	L	d	挡板号 Flange Code
12T10-31	6F	12	AL	38.35	36.35	42	28	21	31	6	13
14T10-31	6F	14		44.70	42.70	48	32	21	31	8	11
15T10-31	6F	15		47.90	45.90	51	32	21	31	8	16
16T10-31	6F	16		51.10	49.10	54	35	21	31	8	18
18T10-31	6F	18		57.45	55.45	60	40	21	31	8	21
19T10-31	6F	19		60.65	58.65	66	44	21	31	8	24
20T10-31	6F	20		63.80	61.80	66	46	21	31	8	24
22T10-31	6F	22		70.20	68.20	75	52	21	31	8	27
24T10-31	6F	24		76.55	74.55	83	58	21	31	8	29
25T10-31	6F	25		79.55	77.75	83	60	21	31	8	29
26T10-31	6F	26		82.90	80.90	87	60	21	31	8	31
27T10-31	6F	27		88.10	84.10	91	60	21	31	8	32
28T10-31	6F	28		89.25	87.25	93	60	21	31	8	33
30T10-31	6F	30		95.65	93.65	97	60	21	31	8	35
32T10-31	6F	32		102.00	100.00	106	65	21	31	10	38
36T10-31	6F	36		114.75	112.75	119	70	21	31	10	43
40T10-31	6F	40		127.45	125.45	131	80	21	31	10	47
44T10-31	6	44		140.20	138.20	-	88	21	31	10	-
48T10-31	6	48		152.95	150.95	-	95	21	31	16	-
60T10-31	6	60		191.15	189.10	-	110	21	31	16	-

## T 10 (Pitch=10mm) for belt width 25 mm

规格代码 Part Code	齿数 Number of Teeth	结构 Type	材料 Mat.	Dp	De	Df	Dm	F	L	d	挡板号 Flange Code
12T10-40	6F	12	AL	38.35	36.35	42	28	30	40	6	13
14T10-40	6F	14		44.70	42.70	48	32	30	40	8	11
15T10-40	6F	15		47.90	45.90	51	32	30	40	8	16
16T10-40	6F	16		51.10	49.10	54	35	30	40	8	18
18T10-40	6F	18		57.45	55.45	60	40	30	40	8	21
19T10-40	6F	19		60.65	58.65	66	44	30	40	8	24
20T10-40	6F	20		63.80	61.80	66	46	30	40	8	24
22T10-40	6F	22		70.20	68.20	75	52	30	40	8	27
24T10-40	6F	24		76.55	74.55	83	58	30	40	8	29
25T10-40	6F	25		79.70	77.70	83	60	30	40	8	29
26T10-40	6F	26		82.90	80.90	87	60	30	40	8	31
27T10-40	6F	27		86.10	84.10	91	60	30	40	8	32
28T10-40	6F	28		89.25	87.25	93	60	30	40	8	33
30T10-40	6F	30		95.65	93.65	97	60	30	40	8	35
32T10-40	6F	32		102.00	100.00	106	65	30	40	10	38
36T10-40	6F	36		114.75	112.75	119	70	30	40	10	43
40T10-40	6F	40		127.45	125.45	131	80	30	40	10	47
44T10-40	6	44		140.20	138.20	-	88	30	40	10	-
48T10-40	6	48		152.95	150.95	-	95	30	40	16	-
60T10-40	6	60		191.15	189.10	-	110	30	40	16	-



### T 10 (Pitch=10mm) for belt width 32 mm

规格代码 Part Code	齿数 Number of Teeth	结构 Type	材料 Mat.	Dp	De	Df	Dm	F	L	d	挡板号 Flange Code
18T10-47	6F	18	AL	57.45	55.45	60	40	37	47	10	21
19T10-47	6F	19		60.65	58.65	66	44	37	47	10	24
20T10-47	6F	20		63.80	61.80	66	46	37	47	12	24
22T10-47	6F	22		70.20	68.20	75	52	37	47	12	27
24T10-47	6F	24		76.55	74.55	83	58	37	47	12	29
25T10-47	6F	25		79.70	77.70	83	60	37	47	12	29
26T10-47	6F	26		82.90	80.90	87	60	37	47	12	31
27T10-47	6F	27		86.10	84.10	91	60	37	47	12	32
28T10-47	6F	28		89.25	87.25	93	60	37	47	12	33
30T10-47	6F	30		95.65	93.65	97	60	37	47	12	35
32T10-47	6F	32		102.00	100.00	106	65	37	47	12	38
36T10-47	6F	36		114.75	112.75	119	70	37	47	16	43
40T10-47	6F	40		127.45	125.45	131	80	37	47	16	47
44T10-47	6	44		140.20	138.20	-	88	37	47	16	-
48T10-47	6	48		152.95	150.95	-	95	37	47	16	-
60T10-47	6	60		191.15	189.10	-	110	37	47	16	-

### T 10 (Pitch=10mm) for belt width 50 mm

规格代码 Part Code	齿数 Number of Teeth	结构 Type	材料 Mat.	Dp	De	Df	Dm	F	L	d	挡板号 Flange Code
18T10-66	6F	18	AL	57.45	55.45	60	40	56	66	10	21
19T10-66	6F	19		60.65	58.65	66	44	56	66	10	24
20T10-66	6F	20		63.80	61.80	66	46	56	66	12	24
22T10-66	6F	22		70.20	68.20	75	52	56	66	12	27
24T10-66	6F	24		76.55	74.55	83	58	56	66	12	29
25T10-66	6F	25		79.70	77.70	83	60	56	66	12	29
26T10-66	6F	26		82.90	80.90	87	60	56	66	12	31
27T10-66	6F	27		86.10	84.10	91	60	56	66	12	32
28T10-66	6F	28		89.25	87.25	93	60	56	66	12	33
30T10-66	6F	30		95.65	93.65	97	60	56	66	12	35
32T10-66	6F	32		102.00	100.00	106	65	56	66	12	38
36T10-66	6F	36		114.75	112.75	119	70	56	66	16	43
40T10-66	6F	40		127.45	125.45	131	80	56	66	16	47
44T10-66	6	44		140.20	138.20	-	88	56	66	16	-
48T10-66	6	48		152.95	150.95	-	95	56	66	16	-
60T10-66	6	60		191.15	189.10	-	110	56	66	16	-



### AT 5 (Pitch=5mm) for belt width 10 mm

Part Code	Number of Teeth	Type	Mat.	De	Df	Dm	F	L	d	Flange Code
12AT5-21	12	6F	AL	17.85	23	11	15	21	-	1
14AT5-21	14	6F		21.05	25	14	15	21	-	2
15AT5-21	15	6F		22.65	28	16	15	21	-	4
16AT5-21	16	6F		24.20	32	18	15	21	-	5
18AT5-21	18	6F		27.40	32	20	15	21	-	6
19AT5-21	19	6F		29.00	36	22	15	21	-	8
20AT5-21	20	6F		30.60	36	23	15	21	-	8
22AT5-21	22	6F		33.85	38	24	15	21	-	9
24AT5-21	24	6F		37.00	42	26	15	21	-	13
25AT5-21	25	6F		38.60	44	26	15	21	-	12
26AT5-21	26	6F		40.20	44	30	15	21	-	12
27AT5-21	27	6F		41.80	48	32	15	21	8	11
28AT5-21	28	6F		43.35	48	34	15	21	8	11
30AT5-21	30	6F		46.55	51	36	15	21	8	16
32AT5-21	32	6F		49.70	54	38	15	21	8	18
36AT5-21	36	6F		56.05	64	40	15	21	8	23
40AT5-21	40	6F		62.45	67	40	15	21	8	24
42AT5-21	42	6F		65.60	70	40	15	21	8	26
44AT5-21	44	6		68.80	-	45	15	21	8	-
48AT5-21	48	6		75.15	-	50	15	21	8	-
60AT5-21	60	6	94.25	-	65	15	21	8	-	

### AT 5 (Pitch=5mm) for belt width 16 mm

Part Code	Number of Teeth	Type	Mat.	Dp	Df	Dm	F	L	d	Flange Code
12AT5-27	12	6F	AL	17.85	23	11	21	27	-	1
14AT5-27	14	6F		21.05	25	14	21	27	-	2
15AT5-27	15	6F		22.65	28	16	21	27	-	4
16AT5-27	16	6F		24.20	32	18	21	27	-	5
18AT5-27	18	6F		27.40	32	20	21	27	-	6
19AT5-27	19	6F		29.00	36	22	21	27	-	8
20AT5-27	20	6F		30.60	36	23	21	27	-	8
22AT5-27	22	6F		33.85	38	24	21	27	-	9
24AT5-27	24	6F		37.00	42	26	21	27	-	13
25AT5-27	25	6F		38.60	44	26	21	27	-	12
26AT5-27	26	6F		40.20	44	26	21	27	-	12
27AT5-27	27	6F		41.80	48	30	21	27	8	11
28AT5-27	28	6F		43.35	48	32	21	27	8	11
30AT5-27	30	6F		46.55	51	34	21	27	8	16
32AT5-27	32	6F		49.70	54	36	21	27	8	18
36AT5-27	36	6F		56.05	64	38	21	27	8	23
40AT5-27	40	6F		62.45	67	40	21	27	8	24
42AT5-27	42	6F		65.60	70	40	21	27	8	26
44AT5-27	44	6		68.80	-	45	21	27	8	-
48AT5-27	48	6		75.15	-	50	21	27	8	-
60AT5-27	60	6	94.25	-	65	21	27	8	-	



### AT 5 (Pitch=5mm) for belt width 25 mm

Part Code	Number of Teeth	Type	Mat.	De	Df	Dm	F	L	d	Flange Code
12AT5-36	12	6F	AL	17.85	23	11	30	36	-	1
14AT5-36	14	6F		21.05	25	14	30	36	-	2
15AT5-36	15	6F		22.65	28	16	30	36	-	4
16AT5-36	16	6F		24.20	32	18	30	36	-	5
18AT5-36	18	6F		27.40	32	20	30	36	-	6
19AT5-36	19	6F		29.00	36	22	30	36	-	8
20AT5-36	20	6F		30.60	36	23	30	36	-	8
22AT5-36	22	6F		33.85	38	24	30	36	-	9
24AT5-36	24	6F		37.00	42	26	30	36	-	13
25AT5-36	25	6F		38.60	44	26	30	36	-	12
26AT5-36	26	6F		40.20	44	26	30	36	-	12
27AT5-36	27	6F		41.80	48	30	30	36	8	11
28AT5-36	28	6F		43.35	48	32	30	36	8	11
30AT5-36	30	6F		46.55	51	34	30	36	8	16
32AT5-36	32	6F		49.70	54	36	30	36	8	18
36AT5-36	36	6F		56.05	64	38	30	36	8	23
40AT5-36	40	6F		62.45	67	40	30	36	8	24
42AT5-36	42	6F		65.60	70	40	30	36	8	26
44AT5-36	44	6		68.80	-	45	30	36	8	-
48AT5-36	48	6		75.15	-	50	30	36	8	-
60AT5-36	60	6	94.25	-	65	30	36	8	-	

### AT 10 (Pitch=10mm) for belt width 16 mm

Part Code	Number of Teeth	Type	Mat.	De	Df	Dm	F	L	d	Flange Code	
15AT10-31	15	6F	AL	45.90	51	31	21	31	8	16	
16AT10-31	16	6F		49.05	54	35	21	31	8	18	
18AT10-31	18	6F		55.45	60	40	21	31	8	21	
19AT10-31	19	6F		58.60	66	44	21	31	8	24	
20AT10-31	20	6F		61.80	66	46	21	31	8	24	
22AT10-31	22	6F		68.15	75	52	21	31	8	27	
24AT10-31	24	6F		74.55	83	58	21	31	8	29	
25AT10-31	25	6F		77.70	83	60	21	31	8	29	
26AT10-31	26	6F		80.90	87	60	21	31	8	31	
27AT10-31	27	6F		84.10	91	60	21	31	8	32	
28AT10-31	28	6F		87.25	93	60	21	31	8	33	
30AT10-31	30	6F		93.65	97	60	21	31	8	35	
32AT10-31	32	6F		100.00	106	65	21	31	10	38	
36AT10-31	36	6F		112.75	119	70	21	31	10	43	
40AT10-31	40	6F		125.45	131	80	21	31	10	47	
44AT10-31	44	6		138.20	-	88	21	31	10	-	
48AT10-31	48	6		150.95	-	95	21	31	16	-	
60AT10-31	60	6		189.10	-	110	21	31	16	-	



### AT 10 (Pitch=10mm) for belt width 25 mm

Part Code	Number of Teeth	Type	Mat.	Dp	Df	Dm	F	L	d	Flange Code
15TA10-40	15	6F	AL	45.90	51	31	30	40	8	16
16AT10-40	16	6F		49.05	54	35	30	40	8	18
18AT10-40	18	6F		55.45	60	40	30	40	8	21
19AT10-40	19	6F		58.60	66	44	30	40	8	24
20AT10-40	20	6F		61.80	66	46	30	40	8	24
22AT10-40	22	6F		68.15	75	52	30	40	8	27
24AT10-40	24	6F		74.55	83	58	30	40	8	29
25AT10-40	25	6F		77.70	83	60	30	40	8	29
26AT10-40	26	6F		80.90	87	60	30	40	8	31
27AT10-40	27	6F		84.10	91	60	30	40	8	32
28AT10-40	28	6F		87.25	93	60	30	40	8	33
30AT10-40	30	6F		93.65	97	60	30	40	8	35
32AT10-40	32	6F		100.00	106	65	30	40	10	38
36AT10-40	36	6F		112.75	119	70	30	40	10	43
40AT10-40	40	6F		125.45	131	80	30	40	10	47
44AT10-40	44	6		138.20	-	88	30	40	10	-
48AT10-40	48	6		150.95	-	95	30	40	16	-
60AT10-40	60	6		189.10	-	110	30	40	16	-

### AT 10 (Pitch=10mm) for belt width 32 mm

Part Code	Number of Teeth	Type	Mat.	Dp	Df	Dm	F	L	d	Flange Code
18AT10-47	18	6F	AL	55.45	60	40	37	47	10	21
19AT10-47	19	6F		58.60	66	44	37	47	10	24
20AT10-47	20	6F		61.80	66	46	37	47	12	24
22AT10-47	22	6F		68.15	75	52	37	47	12	27
24AT10-47	24	6F		74.55	83	58	37	47	12	29
25AT10-47	25	6F		77.70	83	60	37	47	12	29
26AT10-47	26	6F		80.90	87	60	37	47	12	31
27AT10-47	27	6F		84.10	91	60	37	47	12	32
28AT10-47	28	6F		87.25	93	60	37	47	12	33
30AT10-47	30	6F		93.65	97	60	37	47	12	35
32AT10-47	32	6F		100.00	106	65	37	47	12	38
36AT10-47	36	6F		112.75	119	70	37	47	16	43
40AT10-47	40	6F		125.45	131	80	37	47	16	47
44AT10-47	44	6		138.20	-	88	37	47	16	-
48AT10-47	48	6		150.95	-	95	37	47	16	-
60AT10-47	60	6		189.10	-	110	37	47	16	-

### AT 10 (Pitch=10mm) for belt width 50 mm

Part Code	Number of Teeth	Type	Mat.	Dp	Df	Dm	F	L	d	Flange Code
18AT10-66	18	6F	AL	55.45	60	40	56	66	10	21
19AT10-66	19	6F		58.60	66	44	56	66	10	24
20AT10-66	20	6F		61.80	66	46	56	66	12	24
22AT10-66	22	6F		68.15	75	52	56	66	12	27
24AT10-66	24	6F		74.55	83	58	56	66	12	29
25AT10-66	25	6F		77.70	83	60	56	66	12	29
26AT10-66	26	6F		80.90	87	60	56	66	12	31
27AT10-66	27	6F		84.10	91	60	56	66	12	32
28AT10-66	28	6F		87.25	93	60	56	66	12	33
30AT10-66	30	6F		93.65	97	60	56	66	12	35
32AT10-66	32	6F		100.00	106	65	56	66	12	38
36AT10-66	36	6F		112.75	119	70	56	66	16	43
40AT10-66	40	6F		125.45	131	80	56	66	16	47
44AT10-66	44	6		138.20	-	88	56	66	16	-
48AT10-66	48	6		150.95	-	95	56	66	16	-
60AT10-66	60	6		189.10	-	110	56	66	16	-



## HTD 3M-06

规格代码 Part Code	齿数 Number of Teeth	结构 Type	材料 Mat.	Dp	De	Df	Dm	Di	F	L	d	挡板号 Flange Code
10-3M-06	10	1F	AL	9.55	8.79	13	13	-	7.2	14.5	-	501
12-3M-06	12	1F		11.46	10.70	15	15	-	7.2	14.5	-	502
14-3M-06	14	1F		13.37	12.61	16	16	-	7.2	14.5	-	503
15-3M-06	15	1F		14.32	13.56	17.5	17.5	-	7.2	14.5	-	516
16-3M-06	16	6F		15.28	14.52	17.5	10	-	9.8	17.5	-	504
18-3M-06	18	6F		17.19	16.43	20	11	-	9.8	17.5	-	505
20-3M-06	20	6F		19.10	18.34	23	13	-	9.8	17.5	-	517
21-3M-06	21	6F		20.05	19.29	25	13	-	9.8	17.5	-	518
22-3M-06	22	6F		21.01	20.25	25	13	-	9.8	17.5	-	518
24-3M-06	24	6F		22.92	22.16	25	13	-	9.8	17.5	-	518
26-3M-06	26	6F		24.83	24.07	28	16	-	9.8	17.5	-	508
28-3M-06	28	6F		26.74	25.98	32	18	-	9.8	17.5	-	509
30-3M-06	30	6F		28.65	27.89	32	20	-	9.8	17.5	-	509
32-3M-06	32	6F		30.56	29.80	36	22	-	9.8	17.5	-	510
36-3M-06	36	6F		34.38	33.62	39	26	-	10.3	18	-	519
40-3M-06	40	6F		38.20	37.44	42	28	-	10.3	18	-	513
44-3M-06	44	6F		42.02	41.26	48	33	-	10.3	18	-	520
48-3M-06	48	6		45.84	45.08	-	33	-	10.3	18.6	8	-
60-3M-06	60	6		57.30	56.54	-	33	-	10.3	18.6	8	-
72-3M-06	72	6		68.75	67.99	-	33	-	10.3	18.6	8	-

## HTD 3M-09

规格代码 Part Code	齿数 Number of Teeth	结构 Type	材料 Mat.	Dp	De	Df	Dm	Di	F	L	d	挡板号 Flange Code
10-3M-09	10	1F	AL	9.55	8.79	13	13	-	10.2	17.5	-	501
12-3M-09	12	1F		11.46	10.70	15	15	-	10.2	17.5	-	502
14-3M-09	14	1F		13.37	12.61	16	16	-	10.2	17.5	-	503
15-3M-09	15	1F		14.32	13.56	17.5	17.5	-	10.2	17.5	-	516
16-3M-09	16	6F		15.28	14.52	17.5	10	-	12.8	20.6	-	504
18-3M-09	18	6F		17.19	16.43	20	11	-	12.8	20.6	-	505
20-3M-09	20	6F		19.10	18.34	23	13	-	12.8	20.6	-	517
21-3M-09	21	6F		20.05	19.29	25	13	-	12.8	20.6	-	518
22-3M-09	22	6F		21.01	20.25	25	13	-	12.8	20.6	-	518
24-3M-09	24	6F		22.92	22.16	25	13	-	12.8	20.6	-	518
26-3M-09	26	6F		24.83	24.07	28	16	-	12.8	20.6	-	508
28-3M-09	28	6F		26.74	25.98	32	18	-	12.8	20.6	-	509
30-3M-09	30	6F		28.65	27.89	32	20	-	12.8	20.6	-	509
32-3M-09	32	6F		30.56	29.80	36	22	-	12.8	20.6	-	510
36-3M-09	36	6F		34.38	33.62	39	26	-	13.4	22.2	-	519
40-3M-09	40	6F		38.20	37.44	42	28	-	13.4	22.2	-	513
44-3M-09	44	6F		42.02	41.26	48	33	-	13.4	22.2	-	520
48-3M-09	48	6		45.84	45.08	-	33	-	13.4	22.2	8	-
60-3M-09	60	6		57.30	56.54	-	33	-	13.4	22.2	8	-
72-3M-09	72	6		68.75	67.99	-	33	-	13.4	22.2	8	-



## HTD 3M-15

规格代码 Part Code	齿数 Number of Teeth	结构 Type	材料 Mat.	Dp	De	Df	Dm	Di	F	L	d	挡板号 Flange Code
10-3M-15	10	1F	AL	9.55	8.79	13	13	-	17	26	-	501
12-3M-15	12	1F		11.46	10.70	15	15	-	17	26	-	502
14-3M-15	14	1F		13.37	12.61	16	16	-	17	26	-	503
15-3M-15	15	1F		14.32	13.56	17.5	17.5	-	17	26	-	516
16-3M-15	16	6F		15.28	14.52	17.5	10	-	19.5	26	-	504
18-3M-15	18	6F		17.19	16.43	20	11	-	19.5	26	-	505
20-3M-15	20	6F		19.10	18.34	23	13	-	19.5	26	-	517
21-3M-15	21	6F		20.05	19.29	25	13	-	19.5	26	-	518
22-3M-15	22	6F		21.01	20.25	25	13	-	19.5	26	-	518
24-3M-15	24	6F		22.92	22.16	25	13	-	19.5	26	-	518
26-3M-15	26	6F		24.83	24.07	28	16	-	19.5	26	-	508
28-3M-15	28	6F		26.74	25.98	32	18	-	19.5	26	-	509
30-3M-15	30	6F		28.65	27.89	32	20	-	19.5	26	-	509
32-3M-15	32	6F		30.56	29.80	36	22	-	19.5	26	-	510
36-3M-15	36	6F		34.38	33.62	39	26	-	20	30	-	519
40-3M-15	40	6F		38.20	37.44	42	28	-	20	30	-	513
44-3M-15	44	6F		42.02	41.26	48	33	-	20	30	-	520
48-3M-15	48	6		45.84	45.08	-	33	-	20	30	8	-
60-3M-15	60	6		57.30	56.54	-	33	-	20	30	8	-
72-3M-15	72	6		68.75	67.99	-	33	-	20	30	8	-

## HTD 5M-09

规格代码 Part Code	齿数 Number of Teeth	结构 Type	材料 Mat.	Dp	De	Df	Dm	Di	F	L	d	挡板号 Flange Code
12-5M-09	12	6F	STEEL	19.10	17.96	23	12	-	14.5	20	-	14
14-5M-09	14	6F		22.28	21.14	25	13	-	14.5	20	-	2
15-5M-09	15	6F		23.87	22.73	28	16	-	14.5	20	-	4
16-5M-09	16	6F		25.46	24.32	28	16.5	-	14.5	20	-	4
18-5M-09	18	6F		28.65	27.51	32	20	-	14.5	20	-	6
20-5M-09	20	6F		31.83	30.69	36	23	-	14.5	22.5	-	8
21-5M-09	21	6F		33.42	32.28	38	24	-	14.5	22.5	-	9
22-5M-09	22	6F		35.01	33.87	39	25.5	-	14.5	22.5	-	15
24-5M-09	24	6F		38.20	37.06	42	27	-	14.5	22.5	-	13
26-5M-09	26	6F		41.38	40.24	44	30	-	14.5	22.5	-	12
28-5M-09	28	6F		44.56	43.42	48	30.5	-	14.5	22.5	-	11
30-5M-09	30	6F		47.75	46.60	51	35	-	14.5	22.5	-	16
32-5M-09	32	6F		50.93	49.79	54	38	-	14.5	22.5	8	18
36-5M-09	36	6F		57.30	56.16	60	38	-	14.5	22.5	8	21
40-5M-09	40	6F		63.66	62.52	71	38	-	14.5	22.5	8	25
44-5M-09	44	6W		AL	70.03	68.89	-	38	54	14.5	22.5	8
48-5M-09	48	6W	76.39		75.25	-	45	61	14.5	22.5	8	-
60-5M-09	60	6W	95.49		94.35	-	45	80	14.5	22.5	8	-
72-5M-09	72	6W	114.59		113.45	-	45	100	14.5	22.5	8	-



## HTD 5M-15

规格代码 Part Code	齿数 Number of Teeth	结构 Type	材料 Mat.	Dp	De	Df	Dm	Di	F	L	d	挡板号 Flange Code
12-5M-15	12	6F	STEEL	19.10	17.96	23	12	-	20.5	26	-	14
14-5M-15	14	6F		22.28	21.14	25	13	-	20.5	26	-	2
15-5M-15	15	6F		23.87	22.73	28	16	-	20.5	26	-	4
16-5M-15	16	6F		25.46	24.32	28	16.5	-	20.5	26	-	4
18-5M-15	18	6F		28.65	27.51	32	20	-	20.5	26	-	6
20-5M-15	20	6F		31.83	30.69	36	23	-	20.5	26	-	8
21-5M-15	21	6F		33.42	32.28	38	24	-	20.5	26	-	9
22-5M-15	22	6F		35.01	33.87	39	25.5	-	20.5	26	-	15
24-5M-15	24	6F		38.20	37.06	42	27	-	20.5	28	-	13
26-5M-15	26	6F		41.38	40.24	44	30	-	20.5	28	-	12
28-5M-15	28	6F		44.56	43.42	48	30.5	-	20.5	28	-	11
30-5M-15	30	6F		47.75	46.60	51	35	-	20.5	28	-	16
32-5M-15	32	6F		50.93	49.79	54	38	-	20.5	28	8	18
36-5M-15	36	6F		57.30	56.16	60	38	-	20.5	28	8	21
40-5M-15	40	6F		63.66	62.52	71	38	-	20.5	28	8	25
44-5M-15	44	6W		AL	70.03	68.89	-	38	54	20.5	30	8
48-5M-15	48	6W	76.39		75.25	-	45	61	20.5	30	8	-
60-5M-15	60	6W	95.49		94.35	-	45	80	20.5	30	8	-
72-5M-15	72	6W	114.59		113.45	-	45	100	20.5	30	8	-

## HTD 5M-25

规格代码 Part Code	齿数 Number of Teeth	结构 Type	材料 Mat.	Dp	De	Df	Dm	Di	F	L	d	挡板号 Flange Code
12-5M-25	12	6F	STEEL	19.10	17.96	23	12	-	30.5	36	-	14
14-5M-25	14	6F		22.28	21.14	25	13	-	30.5	36	-	2
15-5M-25	15	6F		23.87	22.73	28	16	-	30.5	36	-	4
16-5M-25	16	6F		25.46	24.32	28	16.5	-	30.5	36	-	4
18-5M-25	18	6F		28.65	27.51	32	20	-	30.5	36	-	6
20-5M-25	20	6F		31.83	30.69	36	23	-	30.5	36.5	-	8
21-5M-25	21	6F		33.42	32.28	38	24	-	30.5	38.5	-	9
22-5M-25	22	6F		35.01	33.87	39	25.5	-	30.5	38.5	-	15
24-5M-25	24	6F		38.20	37.06	42	27	-	30.5	38.5	-	13
26-5M-25	26	6F		41.38	40.24	44	30	-	30.5	38.5	-	12
28-5M-25	28	6F		44.56	43.42	48	30.5	-	30.5	38.5	-	11
30-5M-25	30	6F		47.75	46.60	51	35	-	30.5	38.5	-	16
32-5M-25	32	6F		50.93	49.79	54	38	-	30.5	38.5	8	18
36-5M-25	36	6F		57.30	56.16	60	38	-	30.5	38.5	8	21
40-5M-25	40	6F		63.66	62.52	71	38	-	30.5	38.5	8	25
44-5M-25	44	6W		AL	70.03	68.89	-	38	54	30.5	40.5	8
48-5M-25	48	6W	76.39		75.25	-	45	61	30.5	40.5	8	-
60-5M-25	60	6W	95.49		94.35	-	45	80	30.5	40.5	8	-
72-5M-25	72	6W	114.59		113.45	-	45	100	30.5	40.5	8	-



## HTD 8M-20

规格代码 Part Code	齿数 Number of Teeth	结构 Type	材料 Mat.	Dp	De	Df	Dm	Di	F	L	d	挡板号 Flange Code
22-8M-20	22	6F	STEEL	56.02	54.65	60	43	-	28	38	12	53
24-8M-20	24	6F		61.12	59.75	66	45	-	28	38	12	69
26-8M-20	26	6F		66.21	64.84	70	48	-	28	38	12	61
28-8M-20	28	6F		71.30	70.08	75	50	-	28	38	15	79
30-8M-20	30	6F		76.39	75.13	83	55	-	28	38	15	73
32-8M-20	32	6F		81.49	80.16	87	60	-	28	38	15	76
34-8M-20	34	6F		86.58	85.22	91	70	-	28	38	15	66
36-8M-20	36	6F		91.67	90.30	97	75	-	28	38	15	68
38-8M-20	38	6F		96.77	95.39	102	75	-	28	38	15	70
40-8M-20	40	6F		101.86	100.49	106	75	-	28	38	15	77
44-8M-20	44	6F		112.05	110.67	120	75	-	28	38	15	75
48-8M-20	48	6F		122.23	120.86	128	75	-	28	38	15	78
56-8M-20	56	6WF		142.60	141.23	150	80	116	28	38	15	85
64-8M-20	64	6WF		162.97	161.60	168	80	137	28	38	15	90
72-8M-20	72	6WF		183.35	181.97	192	80	158	28	38	15	97
80-8M-20	80	6W		CAST IRON	203.72	202.35	-	90	180	28	38	15
90-8M-20	90	6A	229.18		227.81	-	90	204	28	38	15	-
112-8M-20	112	6A	285.81		283.83	-	90	254	28	38	18	-
144-8M-20	144	6A	366.69		365.32	-	90	336	28	38	20	-
168-8M-20	168	6A	427.81		426.44	-	100	400	28	38	20	-
192-8M-20	192	6A	488.92		487.55	-	100	460	28	38	20	-

## HTD 8M-30

规格代码 Part Code	齿数 Number of Teeth	结构 Type	材料 Mat.	Dp	De	Df	Dm	Di	F	L	d	挡板号 Flange Code
22-8M-30	22	6F	STEEL	56.02	54.65	60	43	-	38	48	12	53
24-8M-30	24	6F		61.12	59.75	66	45	-	38	48	12	69
26-8M-30	26	6F		66.21	64.84	70	48	-	38	48	12	61
28-8M-30	28	6F		71.30	70.08	75	50	-	38	48	15	79
30-8M-30	30	6F		76.39	75.13	83	55	-	38	48	15	73
32-8M-30	32	6F		81.49	80.16	87	60	-	38	48	15	76
34-8M-30	34	6F		86.58	85.22	91	70	-	38	48	15	66
36-8M-30	36	6F		91.67	90.30	97	75	-	38	48	15	68
38-8M-30	38	6F		96.77	95.39	102	75	-	38	48	15	70
40-8M-30	40	6F		101.86	100.49	106	75	-	38	48	15	77
44-8M-30	44	6F		112.05	110.67	120	75	-	38	48	15	75
48-8M-30	48	6F		122.23	120.86	128	75	-	38	48	15	78
56-8M-30	56	6WF		142.60	141.23	150	80	116	38	48	15	85
64-8M-30	64	6WF		162.97	161.60	168	80	137	38	48	15	90
72-8M-30	72	6WF		183.35	181.97	192	80	158	38	48	15	97
80-8M-30	80	6W		CAST IRON	203.72	202.35	-	90	180	38	48	15
90-8M-30	90	6A	229.18		227.81	-	90	204	38	48	15	-
112-8M-30	112	6A	285.21		283.83	-	90	254	38	48	18	-
144-8M-30	144	6A	366.39		365.32	-	90	336	38	48	20	-
168-8M-30	168	6A	427.81		426.44	-	100	400	38	48	20	-
192-8M-30	192	6A	488.92		487.55	-	100	460	38	48	20	-



## HTD 8M-50

规格代码 Part Code	齿数 Number of Teeth	结构 Type	材料 Mat.	Dp	De	Df	Dm	Di	F	L	d	挡板号 Flange Code
22-8M-50	22	6F	STEEL	56.02	54.65	60	43	-	60	70	12	53
24-8M-50	24	6F		61.12	59.75	66	45	-	60	70	12	69
26-8M-50	26	6F		66.21	64.84	70	48	-	60	70	15	61
28-8M-50	28	6F		71.30	70.08	75	50	-	60	70	15	79
30-8M-50	30	6F		76.39	75.13	83	55	-	60	70	15	73
32-8M-50	32	6F		81.49	80.16	87	60	-	60	70	15	76
34-8M-50	34	6F		86.58	85.22	91	70	-	60	70	15	66
36-8M-50	36	6F		91.67	90.30	97	75	-	60	70	15	68
38-8M-50	38	6F		96.77	95.39	102	75	-	60	70	15	70
40-8M-50	40	6F		101.86	100.49	106	75	-	60	70	18	77
44-8M-50	44	6F		112.05	110.67	120	75	-	60	70	18	75
48-8M-50	48	6F		122.23	120.86	128	75	-	60	70	18	78
56-8M-50	56	10WF		142.60	141.23	150	80	116	60	60	18	85
64-8M-50	64	10WF		162.97	161.60	168	80	137	60	60	18	90
72-8M-50	72	10WF		183.35	181.97	192	80	158	60	60	18	97
80-8M-50	80	10W		203.72	202.35	-	90	180	60	60	18	-
90-8M-50	90	9A	229.18	227.81	-	90	204	60	60	18	-	
112-8M-50	112	9A	CAST IRON	285.21	283.83	-	90	254	60	60	18	-
144-8M-50	144	9A		366.69	365.32	-	90	336	60	60	20	-
168-8M-50	168	9A		427.81	426.44	-	100	400	60	60	20	-
192-8M-50	192	9A		488.92	487.55	-	100	460	60	60	20	-

## HTD 8M-85

规格代码 Part Code	齿数 Number of Teeth	结构 Type	材料 Mat.	Dp	De	Df	Dm	Di	F	L	d	挡板号 Flange Code
22-8M-85	22	6F	STEEL	56.02	54.65	60	43	-	95	105	12	53
24-8M-85	24	6F		61.12	59.75	66	45	-	95	105	12	69
26-8M-85	26	6F		66.21	64.84	70	48	-	95	105	12	61
28-8M-85	28	6F		71.30	70.08	75	50	-	95	105	15	79
30-8M-85	30	6F		76.39	75.13	83	55	-	95	105	15	73
32-8M-85	32	6F		81.49	80.16	87	60	-	95	105	15	76
34-8M-85	34	6F		86.58	85.22	91	66	-	95	105	15	66
36-8M-85	36	6F		91.67	90.30	97	70	-	95	105	15	68
38-8M-85	38	6F		96.77	95.39	102	75	-	95	105	15	70
40-8M-85	40	6F		101.86	100.49	106	75	-	95	105	18	77
44-8M-85	44	6F		112.05	110.67	120	75	-	95	105	18	75
48-8M-85	48	6F		122.23	120.86	128	80	-	95	105	18	78
56-8M-85	56	6F		142.60	141.23	150	90	116	95	105	18	85
64-8M-85	64	10WF		162.97	161.60	168	100	137	95	95	20	90
72-8M-85	72	10WF		183.35	181.97	192	100	158	95	95	20	97
80-8M-85	80	10WF		203.72	202.35	-	110	180	95	95	20	-
90-8M-85	90	9A	229.18	227.81	-	110	204	95	95	20	-	
112-8M-85	112	9A	CAST IRON	285.21	283.83	-	110	254	95	95	24	-
144-8M-85	144	9A		366.69	365.32	-	110	336	95	95	24	-
168-8M-85	168	9A		427.81	426.44	-	120	400	95	95	24	-
192-8M-85	192	9A		488.92	487.55	-	130	460	95	95	24	-



## HTD 14M-40

规格代码 Part Code	齿数 Number of Teeth	结构 Type	材料 Mat.	Dp	De	Df	Dm	Di	F	L	d	挡板号 Flange Code
28-14M-40	28	6F	STEEL	124.78	122.12	128	100	-	54	69	24	153
29-14M-40	29	6F		129.23	126.57	138	100	-	54	69	24	154
30-14M-40	30	6F		133.69	130.99	138	100	-	54	69	24	154
32-14M-40	32	6F		142.60	139.88	154	100	-	54	69	24	160
34-14M-40	34	6F		151.52	148.79	160	100	-	54	69	24	166
36-14M-40	36	6F		160.43	157.68	168	100	-	54	69	24	168
38-14M-40	38	6F		169.34	166.60	183	120	-	54	69	24	172
40-14M-40	40	6F		178.25	175.49	188	120	-	54	69	24	162
44-14M-40	44	6F		196.08	193.28	211	120	-	54	69	24	175
48-14M-40	48	6WF		CAST IRON	213.90	211.11	226	135	170	54	69	24
56-14M-40	56	6WF	249.55		246.76	256	135	207	54	69	28	182
64-14M-40	64	6WF	285.21		282.41	296	135	240	54	69	28	184
72-14M-40	72	6A	320.86		318.06	-	135	280	54	69	28	-
80-14M-40	80	6A	356.51		353.71	-	135	314	54	69	28	-
90-14M-40	90	6A	401.07		398.28	-	135	358	54	69	28	-
112-14M-40	112	6A	499.11		496.32	-	135	456	54	69	28	-
144-14M-40	144	6A	641.71		638.92	-	135	600	54	69	28	-
168-14M-40	168	6A	748.66		745.87	-	135	706	54	69	28	-
192-14M-40	192	6A	855.62		852.82	-	135	813	54	69	28	-
216-14M-40	216	6A	962.57	962.57	-	150	920	54	69	28	-	

## HTD 14M-55

规格代码 Part Code	齿数 Number of Teeth	结构 Type	材料 Mat.	Dp	De	Df	Dm	Di	F	L	d	挡板号 Flange Code
28-14M-55	28	6F	STEEL	124.78	122.12	128	100	-	70	85	24	153
29-14M-55	29	6F		129.23	126.57	138	100	-	70	85	24	154
30-14M-55	30	6F		133.69	130.99	138	100	-	70	85	24	154
32-14M-55	32	6F		142.60	139.88	154	100	-	70	85	24	160
34-14M-55	34	6F		151.52	148.79	160	100	-	70	85	24	166
36-14M-55	36	6F		160.43	157.68	168	100	-	70	85	24	168
38-14M-55	38	6F		169.34	166.60	183	120	-	70	85	24	172
40-14M-55	40	6F		178.25	175.49	188	120	-	70	85	24	162
44-14M-55	44	6F		196.08	193.28	211	120	-	70	85	24	175
48-14M-55	48	10WF		CAST IRON	213.90	211.11	226	135	170	70	70	24
56-14M-55	56	10WF	249.55		246.76	256	135	207	70	70	28	182
64-14M-55	64	10WF	285.21		282.41	296	135	240	70	70	28	184
72-14M-55	72	10A	320.86		318.06	-	135	280	70	70	28	-
80-14M-55	80	10A	356.51		353.71	-	135	314	70	70	28	-
90-14M-55	90	10A	401.07		398.28	-	135	358	70	70	28	-
112-14M-55	112	10A	499.11		496.32	-	135	456	70	70	28	-
144-14M-55	144	10A	641.71		638.92	-	135	600	70	70	28	-
168-14M-55	168	10A	748.66		745.87	-	135	706	70	70	28	-
192-14M-55	192	10A	855.62		852.82	-	135	813	70	70	28	-
216-14M-55	216	10A	962.57	962.57	-	150	920	70	70	28	-	



## HTD 14M-170

规格代码 Part Code	齿数 Number of Teeth	结构 Type	材料 Mat.	Dp	De	Df	Dm	Di	F	L	d	挡板号 Flange Code	
28-14M-170	28	6F	STEEL	124.78	122.12	128	100	-	187	202	32	153	
29-14M-170	29	6F		129.23	126.57	138	100	-	187	202	32	154	
30-14M-170	30	6F		133.69	130.99	138	100	-	187	202	32	154	
32-14M-170	32	6F		142.60	139.88	154	100	-	187	202	32	160	
34-14M-170	34	6F		151.52	148.79	160	100	-	187	202	32	166	
36-14M-170	36	6F		160.43	157.68	168	100	-	187	202	32	168	
38-14M-170	38	6F		169.34	166.60	183	120	-	187	202	32	172	
40-14M-170	40	6F		178.25	175.49	188	135	-	187	202	32	162	
44-14M-170	44	6F		196.08	193.28	211	140	-	187	202	32	175	
48-14M-170	48	6F		213.90	211.11	226	150	-	187	202	32	180	
56-14M-170	56	6F		249.55	246.76	256	150	-	187	202	32	182	
64-14M-170	64	10WF		285.21	282.41	296	150	240	187	187	32	184	
72-14M-170	72	10A		CAST IRON	320.86	318.06	-	150	278	187	187	32	-
80-14M-170	80	10A			356.51	353.71	-	150	314	187	187	32	-
90-14M-170	90	10A	401.07		398.28	-	150	358	187	187	32	-	
112-14M-170	112	10A	499.11		496.32	-	150	456	187	187	32	-	
144-14M-170	144	10A	641.71		638.92	-	165	600	187	187	32	-	
168-14M-170	168	10A	748.66		745.87	-	165	706	187	187	32	-	
192-14M-170	192	10A	855.62		852.82	-	165	813	187	187	32	-	
216-14M-170	216	10A	962.57		959.76	-	165	920	187	187	32	-	



## HTD 5M-15

规格代码 Part Code	齿数 Number of Teeth	结构 Type	材料 Mat.	锥孔号 Bush Number	Dp	De	Df	Dm	Di	F	S	R	挡板号 Flange Code
TL34-5M-15	34	3F	STEEL	1008	54.11	52.97	57	-	-	22	22	-	20
TL36-5M-15	36	3F		1108	57.30	56.15	60	-	-	22	22	-	21
TL38-5M-15	38	3F		1108	60.48	59.34	66.5	-	-	22	22	-	24
TL40-5M-15	40	3F		1108	63.66	62.52	71	-	-	22	22	-	25
TL44-5M-15	44	3F		1108	70.03	68.89	75	-	-	22	22	-	27
TL48-5M-15	48	8F		1210	76.39	75.25	83	59	-	22	25	3	29
TL56-5M-15	56	8F		1210	89.13	87.39	93	70	-	22	25	3	33
TL64-5M-15	64	8F		1210	101.86	100.72	106	80	-	22	25	3	38
TL72-5M-15	72	8		1610	114.59	113.45	-	92	-	22	25	3	-
TL80-5M-15	80	8		1610	127.32	126.18	-	92	-	22	25	3	-
TL90-5M-15	90	8		1610	143.24	142.10	-	92	-	22	25	3	-
TL112-5M-15	112	8		2012	178.25	177.11	-	110	-	20	32	12	-
TL136-5M-15	136	7A		2012	216.45	215.31	-	110	199	20	32	6	-

## HTD 8M-20

规格代码 Part Code	齿数 Number of Teeth	结构 Type	材料 Mat.	锥孔号 Bush Number	Dp	De	Df	Dm	Di	F	S	R	挡板号 Flange Code
TL22-8M-20	22	5F	STEEL	1108	56.02	54.45	60	-	37	28	22	6	53
TL24-8M-20	24	5F		1108	61.12	59.75	66	-	44	28	22	6	69
TL26-8M-20	26	5F		1108	66.21	64.84	70	-	45	28	22	6	61
TL28-8M-20	28	5F		1108	71.30	70.08	75	-	50	28	22	6	79
TL30-8M-20	30	5F		1108	76.39	75.13	83	-	58	28	22	6	73
TL32-8M-20	32	5F		1610	81.49	80.16	87	-	63	28	25	3	76
TL34-8M-20	34	5F		1610	86.58	85.22	91	-	64	28	25	3	66
TL36-8M-20	36	5F		1610	91.67	90.30	97	-	68	28	25	3	68
TL38-8M-20	38	5F		1610	96.77	95.39	102	-	72	28	25	3	70
TL40-8M-20	40	5F		1610	101.86	100.49	106	-	76	28	25	3	77
TL44-8M-20	44	8F		2012	112.05	110.67	120	93	-	28	32	4	75
TL48-8M-20	48	8F		2012	122.23	120.86	128	96	-	28	32	4	78
TL56-8M-20	56	8F		2012	142.60	141.23	150	110	-	28	32	4	85
TL64-8M-20	64	8WF		2012	162.97	161.60	168	110	137	28	32	4	90
TL72-8M-20	72	8WF	2012	183.35	181.97	192	110	158	28	32	4	97	
TL80-8M-20	80	8W	CAST IRON	2012	203.72	202.35	-	110	180	28	32	4	-
TL90-8M-20	90	8A		2012	229.18	227.81	-	110	204	28	32	4	-
TL144-8M-20	144	8A		2517	366.69	365.32	-	125	336	28	32	4	-



## HTD 8M-30

规格代码 Part Code	齿数 Number of Teeth	结构 Type	材料 Mat.	锥孔号 Bush Number	Dp	De	Df	Dm	Di	F	S	R	挡板号 Flange Code	
TL22-8M-30	22	5F	STEEL	1108	56.02	54.45	60	-	37	38	22	16	53	
TL24-8M-30	24	5F		1108	61.12	59.75	66	-	44	38	22	16	69	
TL26-8M-30	26	5F		1108	66.21	64.84	70	-	44	38	22	16	61	
TL28-8M-30	28	5F		1210	71.30	70.08	75	-	-	38	25	13	79	
TL30-8M-30	30	3F		1615	76.39	75.13	83	-	-	38	38	-	73	
TL32-8M-30	32	3F		1615	81.49	80.16	87	-	-	38	38	-	76	
TL34-8M-30	34	3F		1615	86.58	85.22	91	-	-	38	38	-	66	
TL36-8M-30	36	3F		1615	91.67	90.30	97	-	-	38	38	-	68	
TL38-8M-30	38	3F		1615	96.77	95.39	102	-	-	38	38	-	70	
TL40-8M-30	40	3F		1615	101.86	100.49	106	-	-	38	32	3	77	
TL44-8M-30	44	4F		2012	112.05	110.67	120	-	86	38	32	3	75	
TL48-8M-30	48	4F		2012	122.23	120.86	128	-	90	38	32	3	78	
TL56-8M-30	56	4F		2012	142.60	141.23	150	-	110	38	45	7	85	
TL64-8M-30	64	8F		2517	162.97	161.60	168	125	-	38	45	7	90	
TL72-8M-30	72	8WF		2517	183.35	181.97	192	125	158	38	45	7	97	
TL80-8M-30	80	8W		CAST IRON	2517	203.72	202.35	-	125	180	38	45	7	-
TL90-8M-30	90	8A			2517	229.18	227.81	-	125	204	38	45	7	-
TL112-8M-30	112	8A	2517		285.21	283.83	-	125	254	38	45	7	-	
TL144-8M-30	144	8A	2517		366.69	365.32	-	125	336	38	45	7	-	

## HTD 8M-50

规格代码 Part Code	齿数 Number of Teeth	结构 Type	材料 Mat.	锥孔号 Bush Number	Dp	De	Df	Dm	Di	F	S	R	挡板号 Flange Code
TL28-8M-50	28	4F	STEEL	1210	71.30	70.08	75	-	50	60	25	17.5	79
TL30-8M-50	30	5F		1615	76.39	75.13	83	-	58	60	38	22	73
TL32-8M-50	32	5F		1615	81.49	80.16	87	-	62	60	38	22	76
TL34-8M-50	34	5F		1615	86.58	85.22	91	-	65	60	38	22	66
TL36-8M-50	36	5F		1615	91.67	90.30	97	-	68	60	38	22	68
TL38-8M-50	38	5F		1615	96.77	95.39	102	-	72	60	38	22	70
TL40-8M-50	40	4F		2012	101.86	100.49	106	-	82	60	32	14	77
TL44-8M-50	44	4F		2012	112.05	110.67	120	-	91	60	32	14	75
TL48-8M-50	48	4F		2012	122.23	120.86	128	-	95	60	32	14	78
TL56-8M-50	56	4F		2517	142.60	141.23	150	-	116	60	45	7.5	85
TL64-8M-50	64	4F		2517	162.97	161.60	168	-	137	60	45	7.5	90
TL72-8M-50	72	9WF		2517	183.35	181.97	192	125	158	60	45	7.5	97
TL80-8M-50	80	4		CAST IRON	3020	203.72	202.35	-	-	180	60	51	4.5
TL90-8M-50	90	9W	3020		229.18	227.81	-	170	204	60	51	4.5	-
TL112-8M-50	112	9W	3020		285.21	283.83	-	170	260	60	51	4.5	-
TL144-8M-50	144	9A	3020		366.69	365.32	-	170	341	60	51	4.5	-
TL168-8M-50	168	7A	3525		427.81	426.44	-	198	395	60	65	2.5	-
TL192-8M-50	192	7A	3525		488.92	487.55	-	198	455	60	65	2.5	-



## HTD 8M-85

规格代码 Part Code	齿数 Number of Teeth	结构 Type	材料 Mat.	锥孔号 Bush Number	Dp	De	Df	Dm	Di	F	S	R	挡板号 Flange Code
TL34-8M-85	34	4F	STEEL	1615	86.58	85.22	91	-	65	95	38	28.5	66
TL36-8M-85	36	4F		1615	91.67	90.30	97	-	68	95	38	28.5	68
TL38-8M-85	38	4F		1615	96.77	95.39	102	-	72	95	38	28.5	70
TL40-8M-85	40	4F		2012	101.86	100.49	106	-	82	95	32	31.5	77
TL44-8M-85	44	4F		2012	112.05	110.67	120	-	91	95	32	31.5	75
TL48-8M-85	48	4F		2517	122.23	120.86	128	-	100	95	45	25	78
TL56-8M-85	56	4F		2517	142.60	141.23	150	-	117	95	45	25	85
TL64-8M-85	64	4F		2517	162.97	161.60	168	-	137	95	45	25	90
TL72-8M-85	72	4F		3020	183.35	181.97	192	-	158	95	51	22	97
TL80-8M-85	80	4		CAST IRON	3020	203.72	202.35	-	-	180	95	51	22
TL90-8M-85	90	9W	3020		229.18	227.81	-	170	204	95	51	22	-
TL112-8M-85	112	9W	3020		285.21	283.83	-	170	260	95	51	22	-
TL144-8M-85	144	9A	3525		366.69	365.32	-	198	336	95	65	15	-
TL168-8M-85	168	9A	3525		427.81	426.44	-	198	395	95	65	15	-
TL192-8M-85	192	9A	3525		488.92	487.55	-	198	455	95	65	15	-

## HTD 14M-40

规格代码 Part Code	齿数 Number of Teeth	结构 Type	材料 Mat.	锥孔号 Bush Number	Dp	De	Df	Dm	Di	F	S	R	挡板号 Flange Code
TL28-14M-40	28	4F	STEEL	2012	124.78	122.12	128	-	94	54	32	11	153
TL29-14M-40	29	4F		2012	129.23	126.57	138	-	98	54	32	11	154
TL30-14M-40	30	4F		2012	133.69	130.99	138	-	98	54	32	11	154
TL32-14M-40	32	4F		2012	142.60	139.88	154	-	108	54	32	11	160
TL34-14M-40	34	4F		2517	151.52	148.79	160	-	110	54	45	4.5	166
TL36-14M-40	36	4F		2517	160.43	157.68	168	-	120	54	45	4.5	168
TL38-14M-40	38	4F		2517	169.34	166.60	183	-	130	54	45	4.5	172
TL40-14M-40	40	4F		2517	178.25	175.49	188	-	138	54	45	4.5	162
TL44-14M-40	44	4F		3020	196.08	193.28	211	-	155	54	51	1.5	175
TL48-14M-40	48	4F		3020	213.90	211.11	226	-	170	54	51	1.5	180
TL56-14M-40	56	9WF	3020	249.55	246.76	256	170	208	54	51	1.5	182	
TL64-14M-40	64	9WF	CAST IRON	3020	285.21	282.41	296	170	240	54	51	1.5	184
TL72-14M-40	72	9W		3020	320.86	318.06	-	170	280	54	51	1.5	-
TL80-14M-40	80	9A		3020	356.51	353.71	-	170	315	54	51	1.5	-
TL90-14M-40	90	9A		3020	401.07	398.28	-	170	360	54	51	1.5	-
TL112-14M-40	112	9A		3020	499.11	496.32	-	170	457	54	51	1.5	-
TL144-14M-40	144	9A		3020	641.71	638.92	-	170	600	54	51	1.5	-
TL168-14M-40	168	9A		3020	748.66	745.87	-	170	706	54	51	1.5	-
TL192-14M-40	192	9A		3020	855.62	852.82	-	170	813	54	51	1.5	-
TL216-14M-40	216	9A		3020	962.57	959.76	-	170	920	54	51	1.5	-



## HTD 14M-55

规格代码 Part Code	齿数 Number of Teeth	结构 Type	材料 Mat.	锥孔号 Bush Number	Dp	De	Df	Dm	Di	F	S	R	挡板号 Flange Code
TL28-14M-55	28	4F	STEEL	2012	124.78	122.12	128	-	94	70	32	19	153
TL29-14M-55	29	4F		2012	129.23	126.57	138	-	100	70	32	19	154
TL30-14M-55	30	4F		2517	133.69	130.99	138	-	100	70	45	12.5	154
TL32-14M-55	32	4F		2517	142.60	139.88	154	-	108	70	45	12.5	160
TL34-14M-55	34	4F		2517	151.52	148.79	160	-	110	70	45	12.5	166
TL36-14M-55	36	4F		2517	160.43	157.68	168	-	120	70	45	12.5	168
TL38-14M-55	38	4F		2517	169.34	166.60	183	-	130	70	45	12.5	172
TL40-14M-55	40	4F		2517	178.25	175.49	188	-	138	70	45	12.5	162
TL44-14M-55	44	4F		3020	196.08	193.28	211	-	155	70	51	9.5	175
TL48-14M-55	48	4F		3020	213.90	211.11	226	-	170	70	51	9.5	180
TL56-14M-55	56	9WF	3020	249.55	246.76	256	170	208	70	51	9.5	182	
TL64-14M-55	64	9WF	CAST IRON	3020	285.21	282.41	296	170	240	70	51	9.5	184
TL72-14M-55	72	9W		3020	320.86	318.06	-	170	280	70	51	9.5	-
TL80-14M-55	80	9A		3020	356.51	353.71	-	170	315	70	51	9.5	-
TL90-14M-55	90	9A		3020	401.07	398.28	-	170	360	70	51	9.5	-
TL112-14M-55	112	9A		3020	499.11	496.32	-	170	457	70	51	9.5	-
TL144-14M-55	144	9A		3020	641.71	638.92	-	170	600	70	51	9.5	-
TL168-14M-55	168	9A		3020	748.66	745.87	-	170	706	70	51	9.5	-
TL192-14M-55	192	9A		3020	855.62	852.82	-	170	813	70	51	9.5	-
TL216-14M-55	216	7A		3535	962.57	959.76	-	170	920	70	89	9.5	-

## HTD 14M-85

规格代码 Part Code	齿数 Number of Teeth	结构 Type	材料 Mat.	锥孔号 Bush Number	Dp	De	Df	Dm	Di	F	S	R	挡板号 Flange Code
TL28-14M-85	28	4F	STEEL	2517	124.78	122.12	128	-	98	102	45	28.5	153
TL29-14M-85	29	4F		2517	129.23	126.57	138	-	100	102	45	28.5	154
TL30-14M-85	30	4F		2517	133.69	130.99	138	-	100	102	45	28.5	154
TL32-14M-85	32	4F		2517	142.60	139.88	154	-	108	102	45	28.5	160
TL34-14M-85	34	4F		2517	151.52	148.79	160	-	110	102	45	28.5	166
TL36-14M-85	36	4F		3020	160.43	157.68	168	-	120	102	51	25.5	168
TL38-14M-85	38	4F		3020	169.34	166.60	183	-	130	102	51	25.5	172
TL40-14M-85	40	4F		3020	178.25	175.49	188	-	138	102	51	25.5	162
TL44-14M-85	44	4F		3020	196.08	193.28	211	-	153	102	51	25.5	175
TL48-14M-85	48	4F		3020	213.90	211.11	226	-	170	102	51	25.5	180
TL56-14M-85	56	4F	3525	249.55	246.76	256	190	210	102	51	25.5	182	
TL64-14M-85	64	9WF	CAST IRON	3525	285.21	282.41	296	190	240	102	65	18.5	184
TL72-14M-85	72	9W		3525	320.86	318.06	-	190	280	102	65	18.5	-
TL80-14M-85	80	9A		3525	356.51	353.71	-	190	315	102	65	18.5	-
TL90-14M-85	90	9A		3525	401.07	398.28	-	190	360	102	65	18.5	-
TL112-14M-85	112	9A		3525	499.11	496.32	-	190	457	102	65	18.5	-
TL144-14M-85	144	9A		3525	641.71	638.92	-	190	600	102	65	18.5	-
TL168-14M-85	168	9A		3525	748.66	745.87	-	190	706	102	65	18.5	-
TL192-14M-85	192	3A		4040	855.62	852.82	-	190	813	102	102	-	-
TL216-14M-85	216	3A		4040	962.57	959.76	-	190	920	102	102	-	-



## HTD 14M-115

规格代码 Part Code	齿数 Number of Teeth	结构 Type	材料 Mat.	锥孔号 Bush Number	Dp	De	Df	Dm	Di	F	S	R	挡板号 Flange Code
TL28-14M-115	28	4F	STEEL	2517	124.78	122.12	128	-	98	133	45	44	153
TL29-14M-115	29	4F		2517	129.23	126.57	138	-	100	133	45	44	154
TL30-14M-115	30	4F		2517	133.69	130.99	138	-	100	133	45	44	154
TL32-14M-115	32	4F		2517	142.60	139.88	154	-	108	133	45	44	160
TL34-14M-115	34	4F		2517	151.52	148.79	160	-	110	133	45	44	166
TL36-14M-115	36	4F		3020	160.43	157.68	168	-	125	133	51	41	168
TL38-14M-115	38	4F		3020	169.34	166.60	183	-	130	133	51	41	172
TL40-14M-115	40	4F		3020	178.25	175.49	188	-	138	133	51	41	162
TL44-14M-115	44	4F		3020	196.08	193.28	211	-	155	133	76	28.5	175
TL48-14M-115	48	4F		3020	213.90	211.11	226	-	170	133	76	28.5	180
TL56-14M-115	56	4F		3535	249.55	246.76	256	-	208	133	89	22	182
TL64-14M-115	64	9WF	CAST IRON	3535	285.21	282.41	296	190	240	133	89	22	184
TL72-14M-115	72	9W		3535	320.86	318.06	-	190	280	133	89	22	-
TL80-14M-115	80	9A		3535	356.51	353.71	-	190	315	133	89	22	-
TL90-14M-115	90	9A		3535	401.07	398.28	-	190	360	133	89	22	-
TL112-14M-115	112	9A		3535	499.11	496.32	-	190	457	133	89	22	-
TL144-14M-115	144	9A		4040	641.71	638.92	-	230	600	133	102	15.5	-
TL168-14M-115	168	9A		4040	748.66	745.87	-	230	706	133	102	15.5	-
TL192-14M-115	192	9A		4040	855.62	852.82	-	230	813	133	102	15.5	-
TL216-14M-115	216	9A	4040	962.57	959.76	-	230	920	133	102	15.5	-	

## HTD 14M-170

规格代码 Part Code	齿数 Number of Teeth	结构 Type	材料 Mat.	锥孔号 Bush Number	Dp	De	Df	Dm	Di	F	S	R	挡板号 Flange Code
TL38-14M-170	38	4F	STEEL	3030	169.34	166.60	183	-	130	187	76	55.5	166
TL40-14M-170	40	4F		3030	178.25	175.49	188	-	138	187	76	55.5	168
TL44-14M-170	44	4F		3535	196.08	193.28	211	-	153	187	89	49	172
TL48-14M-170	48	4F		3535	213.90	211.11	226	-	170	187	89	49	162
TL56-14M-170	56	4F	CAST IRON	3535	249.55	246.76	256	-	208	187	89	49	175
TL64-14M-170	64	4F		4040	285.21	282.41	296	-	240	187	102	42.5	180
TL72-14M-170	72	9W		4040	320.86	318.06	-	230	280	187	102	42.5	182
TL80-14M-170	80	9W		4040	356.51	353.71	-	230	315	187	102	42.5	184
TL90-14M-170	90	9A		4040	401.07	398.28	-	230	360	187	102	42.5	-
TL112-14M-170	112	9A		5050	499.11	496.32	-	265	457	187	127	30	-
TL144-14M-170	144	9A		5050	641.71	638.92	-	265	600	187	127	30	-
TL168-14M-170	168	9A		5050	748.66	745.87	-	265	706	187	127	30	-
TL192-14M-170	192	9A	5050	855.62	852.82	-	265	813	187	127	30	-	
TL216-14M-170	216	9A	5050	962.57	959.76	-	265	920	187	127	30	-	















齿数 Teeth Number (Z)	同步轮齿型 TEETH PROFILE of Timing Pulleys										
	MXL	XL	L	H	3M	5M	8M	14M	T2.5	T5(AT5)	T10(AT10)
	施瑞恩挡板规格代码 SRN flanges code										
10		1	50		501					3	7
11		1	50							1	9
12		2	52		502	14			501	1	13
13		2	83						501	2	12
14		4	54	59	503	2			502	2	11
15		4	55	60	516	4			502	4	16
16	502	5	56	61	504	4			503	5	18
17		6	57	62					503	5	20
18	503	7	58	63	505	6			504	6	21
19		7	59	64					505	8	24
20	503	9	60	76	517	8			505	8	24
21		9	61	66	518	9			505	9	26
22	504	10	62	67	518	15	53		512	9	27
23		13	63	68					512	10	27
24	505	12	63	70	518	13	69		512	13	29
25		12	64	71					506	12	29
26		11	65	72	508	12	61		507	12	31
27		11	65	74					507	11	32
28	506	16	66	75	509	11	79	153	507	11	33
29		16		75				154	507	16	
30	506	18	68	78	509	16	73	154	508	16	35
32	507	20	70	80	510	18	76	160	509	18	38
33			71	81					509		
34		22	72	81		20	66	166	509	21	72
35		22	72	85	519				509	22	
36	508	23	74	85		21	68	168	510	23	43
37									510	23	
38		24		86		24	70	172	510	24	78
39		24			513						
40	509	26	78	90		25	77	162	511	24	47
41		26									
42	509	27	80	94					511	26	
43		27			520						
44	510	27	81	95		27	75	175	513	27	
45			81	96						27	85
46										29	
48		29	85	100		29	78	180	513	29	86
50									514	31	
56		35				33	85	182			
60		38							515	38	100
64						48	90	184			
72						43	97				













劲普机械

Jinpu Mechanical

Address: Room 417-1, Building 8, No. 5-4 Yunhe Road, Chongxian Street,  
Yuhang District, Hangzhou City, Zhejiang Province, China.

Tel: 86-(0)571-88277778

Fax: 86-(0)571-85853285

E-mail: [info@jpmach.com](mailto:info@jpmach.com)

Website: [www.jpmach.com](http://www.jpmach.com)