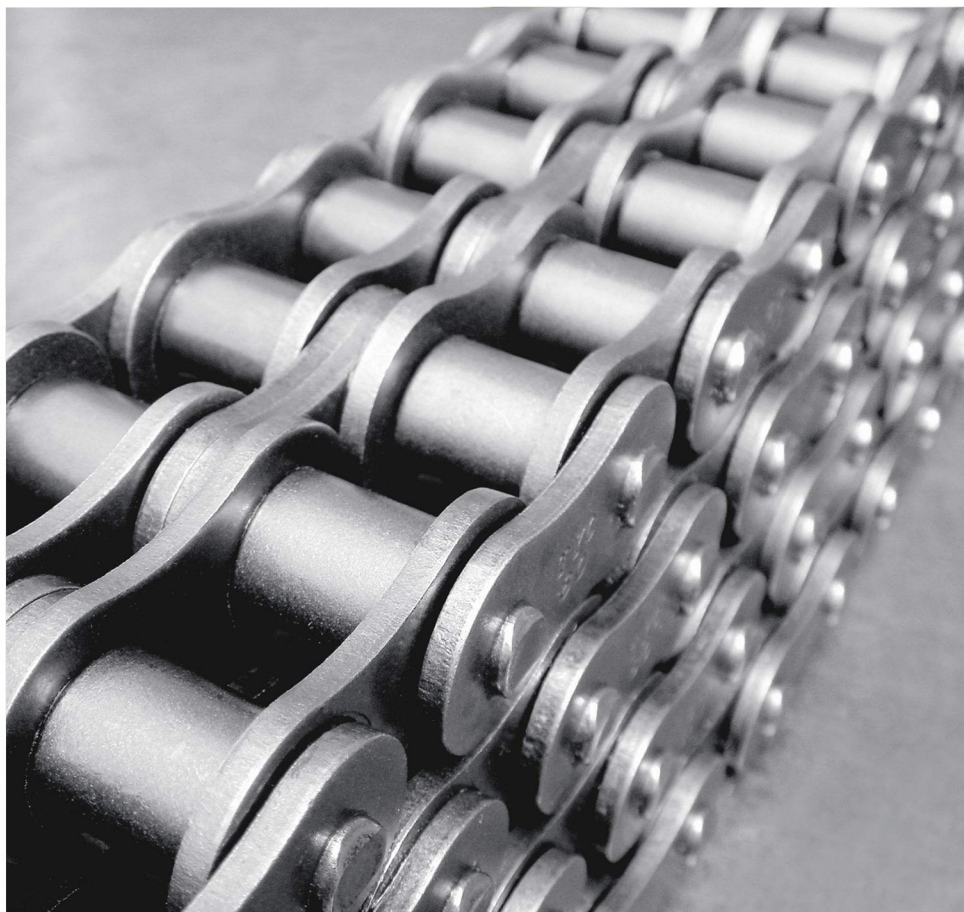
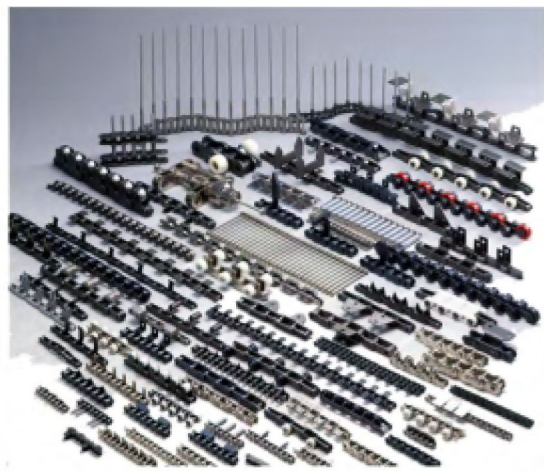




劲普机械

Jinpu Mechanical

Hollow Pin Chains



杭州劲普传动机械有限公司

Hangzhou Jinpu Transmission Mechanical Co., Ltd

[www.jpmach.com](http://www.jpmach.com)

中国·浙江

ZHEJIANG CHINA



## 公司简介 COMPANY PROFILE

---

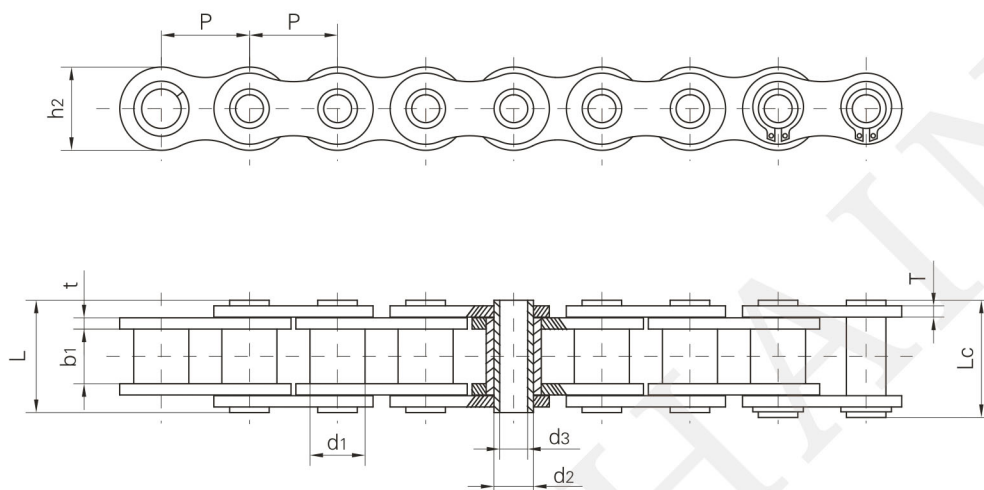
Jinpu, An Enterprise in Zhejiang China, is established over 10 years, 50~100 staff, and an area coverage of 5,000+ square meters for 2 manufacturing plants. Our business scope covers manufacturing Sprocket, Gear, Timing Belt Pulley, Taper Bush, Industrial Chain, mainly focus on non-standard machining parts base on customers' drawings.





## 空心链 Hollow pin chains

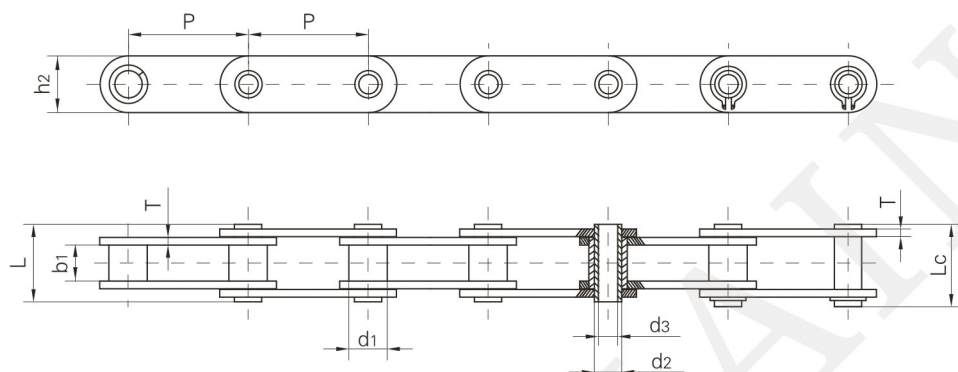
### 空心销轴链 Hollow pin chains



Chain No.	节距 Pitch	套筒直径 Bush diameter	内节内宽 Width between inner plates	销轴直径 Pin diameter		销轴长度 Pin length		内链板高度 Inner plate depth	链板厚度 Plate thickness	极限拉伸载荷 Ultimate tensile strength	平均拉伸载荷 Average tensile strength	每米长重 Weight per meter
	P	d1 max	b1 min	d2 max	d3 min	L max	Lc max	h2 max	t/T max	Q min	Q0	q
	mm	mm	mm	mm	mm	mm	mm	mm	mm	kN/LB	kN	kg/m
	12.700	8.51	7.75	6.55	4.50	16.4	17.6	11.80	1.6/1.3	11.1/2523	12.1	0.56
	12.700	8.51	7.75	6.30	4.50	16.8	18.0	12.00	1.60	9.6/2182	10.6	0.62
	15.875	10.16	9.65	7.02	5.13	19.5	20.5	14.70	1.70	10.0/2272	11.5	0.86
	15.875	10.16	9.50	7.20	5.00	19.8	21.3	14.00	2.03/1.6	12.5/2840	14.0	0.82
	19.050	12.07	11.68	8.09	6.00	22.7	23.9	16.10	1.85	14.0/3180	16.0	0.82
	19.050	12.07	11.70	8.22	5.75	23.6	24.9	16.20	2.42/1.85	16.0/3636	18.0	1.14
	25.400	15.88	17.02	11.50	8.20	35.3	37.0	23.20	4.0/3.1	49.0/11136	52.2	2.26
	25.400	11.70	13.50	8.00	4.30	28.9	30.2	21.30	3.00	30.0/6818	33.0	1.81
	12.700	7.95	7.85	5.63	4.00	16.5	17.6	12.00	1.50	11.0/2500	12.2	0.54
	15.875	10.16	9.40	7.03	5.13	20.7	21.9	15.09	2.03	20.0/4545	22.6	0.91
	15.875	10.16	8.80	7.03	5.13	19.9	21.1	15.09	2.03	18.0/4180	19.2	0.89
	19.050	11.91	12.70	8.31	6.00	25.8	26.8	18.00	2.42	24.0/5455	26.9	1.29
	19.050	11.91	12.70	8.31	5.01	25.5	26.8	18.00	2.42	28.0/6364	30.9	1.37
	25.400	15.88	15.75	11.40	8.05	32.5	33.8	24.00	3.25	50.0/11364	52.0	2.26
	25.400	11.70	13.50	7.80	4.00	27.0	28.4	21.50	2.42	27.44/6236	29.3	1.50
	25.400	15.88	15.75	11.40	8.40	32.5	33.8	24.00	3.25	45.0/10227	48.0	2.23
	50.800	15.88	15.75	11.40	8.05	32.4	33.8	24.00	3.25	42.3/9615	46.1	1.60

## 空心链 Hollow pin chains

### 空心销轴链 Hollow pin chains



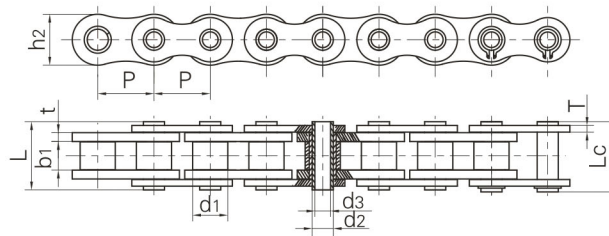
Chain No.	节距 Pitch	套筒直径 Bush diameter	内节内宽 Width between inner plates	销轴直径 Pin diameter		销轴长度 Pin length		内链板高度 Inner plate depth	链板厚度 Plate thickness	极限拉伸载荷 Ultimate tensile strength	平均拉伸载荷 Average tensile strength	每米长重 Weight per meter
	P	d1 max	b1 min	d2 max	d3 min	L max	Lc max	h2 max	T max	Q min	Q0	q
	mm	mm	mm	mm	mm	mm	mm	mm	mm	kN/LB	kN	kg/m
C2040HP	25.400	7.95	7.85	5.63	4.00	16.5	17.6	12.00	1.50	11.0/2500	12.6	0.46
2040HPF1	25.400	7.95	7.85	5.63	M4	16.5	17.6	12.0	1.5	9.0/2045	9.9	0.44
C2050HP	31.750	10.16	9.40	7.22	5.12	20.5	21.8	15.00	2.03	20.4/4636	22.8	0.76
C2060HP	38.100	11.91	12.70	8.31	6.00	25.8	26.8	17.00	2.42	24.0/5455	27.1	1.02
HP40F1	40.000	18.00	22.00	12.00	8.00	47.5	48.2	35.00	5.00	57.0/13049	63.8	5.38
HP40F2	40.000	18.00	22.00	12.00	8.20	47.5	48.2	35.00	5.00	57.0/13049	63.0	5.37
C2080HP	50.800	15.88	15.75	11.40	8.05	32.5	33.8	24.00	3.25	50.0/11364	52.0	1.81
HP50F1	50.000	26.00	14.50	20.00	14.70	35.3	36.2	40.00	3.10	30.0/6818	33.6	3.98
C40HP	12.700	7.95	7.85	5.63	4.00	16.5	17.6	12.00	1.50	11.0/2500	12.2	0.64
C50HP	15.875	10.16	9.40	7.03	5.13	20.7	21.9	15.09	2.03	20.0/4545	22.6	1.05
C60HP	19.050	11.91	12.70	8.31	6.00	25.8	26.8	18.00	2.42	24.0/5455	26.9	1.52
C80HP	25.400	15.88	15.75	11.40	8.05	32.5	33.8	24.00	3.25	50.0/11364	52.0	2.63
C08BHP	12.700	8.51	7.75	6.55	4.50	16.4	17.6	11.8	1.6/1.3	11.0/2500	11.5	0.62
HP12.5	12.500	8.51	8.20	6.65	4.50	16.4	17.6	11.6	1.5/1.3	8.0/1819	8.8	0.61
HP50F7	50.000	18.00	15.00	14.00	10.20	36.0	37.5	26.0	4.0	40/9091	43.2	2.56
HP50F10	50.000	18.00	22.00	12.10	8.30	39.5	40.6	30.0	3.0	45/10227	48.0	2.73
HB55	55.000	18.00	22.00	14.00	10.00	43.4	44.5	30.0	4.0	50/11364	52.0	3.31
HB55F1	55.000	24.00	24.00	17.00	12.00	52.0	53.5	40.0	5.0	90/20455	100.0	6.34
HB38.1F8	38.100	10.16	9.65	7.10	5.40	20.4		16.0	2.03	13/2954	14.3	0.67



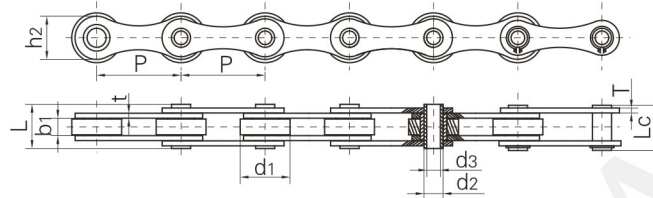
## 空心链 Hollow pin chains

### 空心销轴链 Hollow pin chains

A型  
Type A



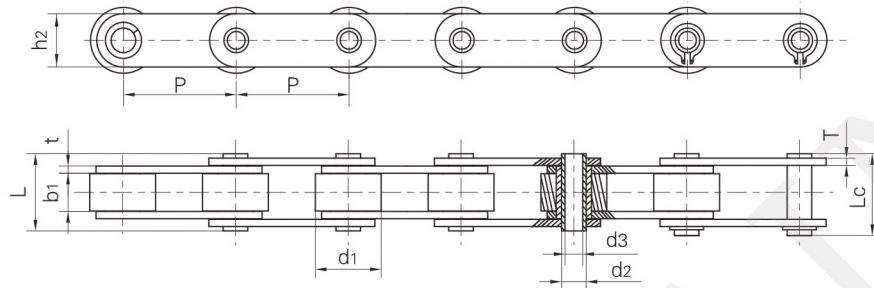
B型  
Type B



Chain No.	节距 Pitch	滚子直径 Roller diameter	内节内宽 Width between inner plates	销轴直径 Pin diameter		销轴长度 Pin length		内链板高度 Inner plate depth	链板厚度 Plate thickness	极限拉伸载荷 Ultimate tensile strength	平均拉伸载荷 Average tensile strength	每米长重 Weight per meter	型号 Type
	P	d <sub>1</sub> max	b <sub>1</sub> min	d <sub>2</sub> max	d <sub>3</sub> min	L max	Lc max	h <sub>2</sub> max	t/T max	Q min	Q <sub>0</sub>	q	
	mm	mm	mm	mm	mm	mm	mm	mm	mm	kN/LB	kN	kg/m	
	15.875	10.16	9.65	5.94	4.04	19.30	20.6	14.70	1.70	17.00/3864	20.8	0.86	A
	19.050	12.07	11.68	6.50	4.00	21.60	22.8	15.90	1.85	23.60/5364	25.9	1.09	A
	19.050	11.91	12.70	7.00	5.01	25.50	26.6	18.00	2.42	20.00/4545	22.4	1.35	A
	25.400	15.88	12.70	9.53	7.05	30.80	32.2	23.00	4.15/3.1	40.00/9091	45.0	2.28	A
	25.400	20.00	8.00	8.00	5.20	19.50	20.5	17.00	2.03	25.00/5680	28.0	1.30	A
	35.000	20.00	16.00	13.35	10.20	30.40	31.6	26.30	2.50	23.52/5345	26.4	2.02	A
	35.000	20.00	16.00	14.00	10.2	32.00	33.5	38.10	3.00	40.00/9091	45.0	2.39	A
	38.100	20.00	8.00	8.00	5.30	19.60	20.7	17.30	2.03	28.00/5682	28.8	0.98	B
	38.100	20.00	18.00	10.50	5.10	39.00	40.3	22.00	4.00	60.00/13636	64.3	2.59	B
	38.100	25.40	12.70	12.00	8.30	27.00	28.6	38.10	2.50	25.00/5682	28.8	1.51	B
	38.100	20.00	12.70	8.00	5.20	26.00	27.2	17.00	2.42	24.00/5455	26.9	1.48	B
	40.000	26.00	10.00	11.40	8.20	26.50	28.0	24.00	3.00	50.00/11364	56.7	2.20	B
1	41.750	17.10	20.20	11.11	8.20	35.70	39.0	21.65	3.10	26.50/6022	29.2	1.60	A
2	41.750	17.10	20.20	11.11	8.20	35.70	41.0	25.26	3.10	49.00/11136	54.8	2.04	A
3	41.750	17.00	20.50	11.00	8.30	36.00	39.5	21.40	3.00	27.00/6136	28.0	1.62	A
	50.000	31.00	15.00	13.20	10.20	36.50	38.0	25.00	4.00	40.00/9091	43.2	3.40	B
	50.000	30.00	10.50	11.40	8.20	27.40	28.6	26.00	3.10	50.00/11364	53.6	2.23	B
	50.800	30.00	10.50	11.40	8.20	27.40	28.6	26.00	3.10	50.00/11364	53.6	2.56	B
	50.800	30.00	10.50	13.60	8.20	27.40	28.9	26.00	3.10	42.00/9545	48.2	2.28	B
	63.000	30.00	10.00	11.40	8.10	26.70	28.1	26.50	3.10	50.00/11364	53.6	2.07	B
	63.000	40.00	10.00	11.40	8.10	26.70	28.1	26.50	3.10	50.00/11364	53.6	2.27	B
	63.000	40.00	20.00	11.40	8.10	36.70	38.1	26.50	3.10	50.00/11364	53.6	3.20	B
	63.000	40.00	15.00	11.40	8.20	35.60	37.0	26.50	4.00	35.00/7955	38.5	3.90	B
	63.000	30.00	20.00	11.40	8.10	27.40	36.7	38.10	3.10	50.00/11364	53.6	2.97	B
	63.000	30.00	10.00	11.70	8.20	26.70	28.1	26.50	3.10	50.00/11364	56.7	2.08	B
	63.000	40.00	18.00	14.00	10.20	38.00	39.5	28.00	4.00	50.00/11364	56.7	4.26	B
	63.000	30.00	20.00	11.70	8.10	36.50	38.0	26.50	3.10	50.00/11364	56.7	2.91	B
	100.000	30.00	10.50	11.40	8.20	27.40	28.6	26.00	3.10	50.00/11364	53.6	1.56	B

## 空心链 Hollow pin chains

### 空心销轴链 Hollow pin chains

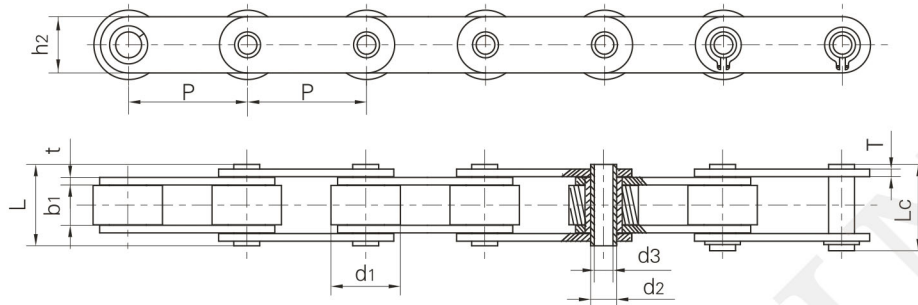


Chain No.	节距 Pitch	滚子直径 Roller diameter	内节内宽 Width between inner plates	销轴直径 Pin diameter		销轴长度 Pin length		内链板高度 Inner plate depth	链板厚度 Plate thickness	极限拉伸载荷 Ultimate tensile strength	平均拉伸载荷 Average tensile strength	每米长重 Weight per meter
	P	d1 max	b1 min	d2 max	d3 min	L max	Lc max	h2 max	t/T max	Q min	Q0	q
	mm	mm	mm	mm	mm	mm	mm	mm	mm	kN/LB	kN	kg/m
P	25.40	15.88	7.85	5.63	4.00	16.5	17.6	12.00	1.50	11.0/2500	12.6	0.78
P	31.75	19.05	9.53	7.22	5.12	20.5	21.8	15.00	2.03	20.4/4636	22.8	1.25
P	38.10	22.23	12.70	8.31	6.00	25.8	26.8	17.00	2.42	24.0/5455	27.1	1.72
P	50.80	28.58	15.75	11.40	8.05	32.4	33.8	24.00	3.25	50.0/11364	52.0	2.82
HP	25.40	15.88	7.85	5.63	4.00	18.8	19.9	12.00	2.03	11.0/2500	13.2	0.95
F1	31.75	19.05	9.40	7.03	5.12	20.0	21.5	15.30	1.85	15.0/3409	17.3	1.21
F3	31.75	19.05	9.53	7.02	5.13	20.1	21.6	15.09	2.03	19.6/4455	21.6	1.20
HP	31.75	19.05	9.53	7.22	5.12	22.1	23.4	15.00	2.42	20.4/4545	23.5	1.44
HP	38.10	22.23	12.70	8.31	6.00	29.2	30.2	17.00	3.25	24.0/5455	27.6	1.99
HP	50.80	28.58	15.75	11.40	8.05	35.7	37.0	24.00	4.00	50.0/11364	56.5	3.34
	40.00	22.00	8.75	9.00	6.00	23.0	24.2	18.00	2.50	27.0/4545	28.0	1.49
	40.00	22.00	9.00	9.00	6.00	23.0	24.5	18.00	2.50	20.0/4546	22.0	1.58
	41.40	25.40	15.00	13.8	10.50	35.5	37.0	32.00	4.00	45.0/10227	48.0	4.20
	50.00	31.00	14.50	13.20	10.40	31.1	32.5	25.00	3.10	30.0/6818	34.2	3.29
	50.00	31.00	15.00	13.20	10.20	36.5	38.0	25.00	4.00	40.0/9091	44.8	3.73
	50.00	31.00	15.00	14.00	10.20	36.0	37.5	25.00	4.00	40.0/9091	43.2	3.98
8	50.80	32.00	20.00	19.10	12.40	44.6	46.4	40.00	5.0/4.0	100.0/22727	108.0	6.75
P	50.80	30.00	10.5	13.00	8.20	27.4	28.9	26.00	3.10	42.0/9545	48.2	2.72
	50.80	26.00	15.88	20.00	14.30	41.0	42.2	38.10	4.80	100.0/22727	108.0	5.32
9	50.80	35.00	12.00	15.50	10.20	36.0	37.3	30.00	5.00	70.0/15909	77.0	4.92
	63.00	40.00	15.00	16.00	12.10	35.0	36.2	28.50	4.00	50.0/11364	56.7	4.20
P	50.80	31.80	15.00	14.00	10.10	36.3	39.0	26.00	3.80	42.0/9545	51.6	3.75
P	76.20	31.80	15.00	14.00	10.10	36.3	39.0	26.00	3.80	42.0/9545	47.1	3.01
HP	88.90	31.80	15.00	14.00	10.10	36.3	39.0	26.00	3.80	42.0/9545	51.1	2.79
P	101.60	31.80	15.00	14.00	10.10	36.3	39.0	26.00	3.80	42.0/9545	51.6	2.63
P	76.20	47.60	19.00	19.05	13.60	43.8	46.3	39.00	5.1/3.8	84.3/19159	130.3	6.81
P	101.60	47.60	19.00	19.05	13.60	43.8	46.3	39.00	5.1/3.8	84.3/19159	130.3	5.78

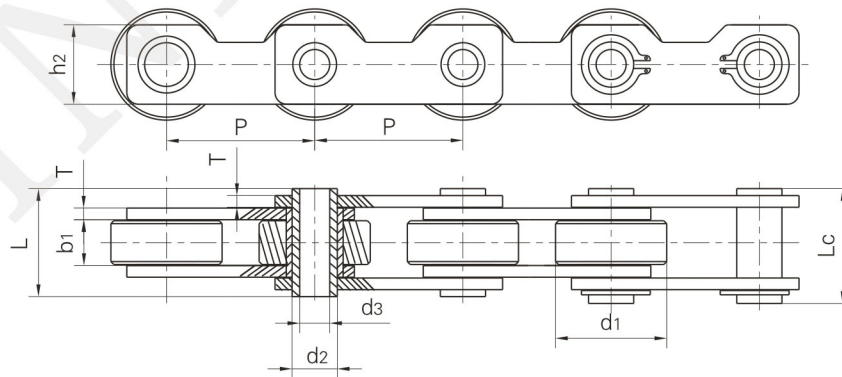


## 空心链 Hollow pin chains

### 空心销轴链 Hollow pin chains



Chain No.	节距 Pitch	滚子直径 Roller diameter	内节内宽 Width between inner plates	销轴直径 Pin diameter		销轴长度 Pin length		内链板高度 Inner plate depth	链板厚度 Plate thickness	极限拉伸载荷 Ultimate tensile strength	平均拉伸载荷 Average tensile strength	每米长重 Weight per meter
	P	d1 max	b1 min	d2 max	d3 min	L max	Lc max	h2 max	t/T max	Q min	Q0	q
	mm	mm	mm	mm	mm	mm	mm	mm	mm	kN/LB	kN	kg/m
	152.40	47.60	19.00	19.05	13.60	43.8	46.3	39.0	5.1/3.8	84.0/19091	130.3	5.18
	38.10	25.40	12.70	9.50	6.60	26.6	28.0	19.1	2.30	20.0/4545	22.4	2.07
	50.80	30.00	16.00	14.00	9.00	36.4	37.5	25.5	3.10	42.0/9545	47.0	3.20
	75.00	40.00	22.00	18.00	12.20	42.0	44.0	35.0	4.00	60.0/13636	72.0	5.57
	76.20	31.75	15.50	12.70	9.50	35.5	37.0	26.0	4.00	42.0/9545	49.2	3.25
	76.20	47.60	20.00	24.00	18.50	44.5	46.1	40.0	5.0/4.0	79.0/17953	92.5	6.77
	80.00	50.00	20.00	24.00	18.50	44.5	46.1	40.0	5.0/4.0	79.0/17953	92.5	6.81
	100.00	45.00	22.00	16.00	12.00	46.0	47.5	35.0	5.00	75.0/17044	90.0	6.20
	100.00	45.00	22.00	18.00	12.00	47.2	48.5	35.0	5.00	75.0/17044	90.0	6.15
	101.60	47.60	19.00	19.00	13.20	46.2	48.0	40.0	5.0/4.0	53.0/12045	58.2	6.09
	101.60	66.70	25.40	26.90	20.10	59.2	60.7	51.0	7.1/5.1	150.0/34088	160.0	14.23
	152.40	66.70	25.40	26.90	19.56	57.2	59.5	50.8	7.1/5.1	94.0/21362	107.8	9.90
	152.40	47.60	19.00	19.00	13.20	46.2	48.0	40.0	5.0/4.0	54.0/12270	59.5	5.00

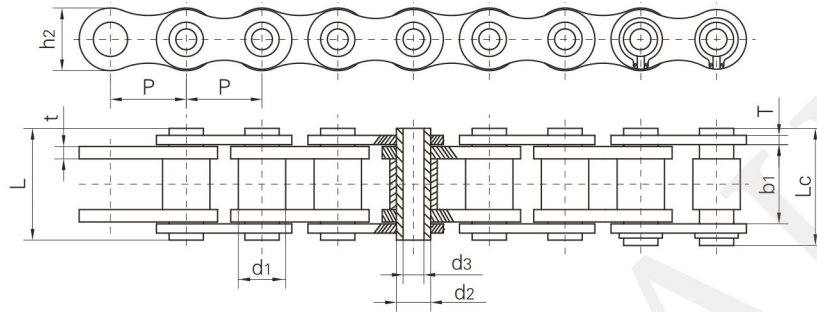


Chain No.	节距 Pitch	滚子直径 Roller diameter	内节内宽 Width between inner plates	销轴直径 Pin diameter		销轴长度 Pin length		链板高度 Plate depth	链板厚度 Plate thickness	极限拉伸载荷 Ultimate tensile strength	平均拉伸载荷 Average tensile strength	每米长重 Weight per meter
	P	d1 max	b1 min	d2 max	d3 min	L max	Lc max	h2 max	T	Q min	Q0	q
	mm	mm	mm	mm	mm	mm	mm	mm	mm	kN/LB	kN	kg/m
HB50.8F1	50.80	38.10	15.70	15.50	10.3	35.2	36.7	27.2	4.00	55.46/51650	58.8	4.97

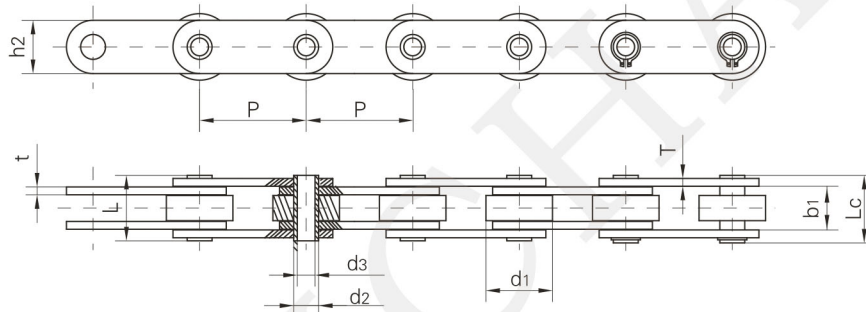
## 空心链 Hollow pin chains

### 空心销轴链 Hollow pin chains

A型  
Type A



B型  
Type B



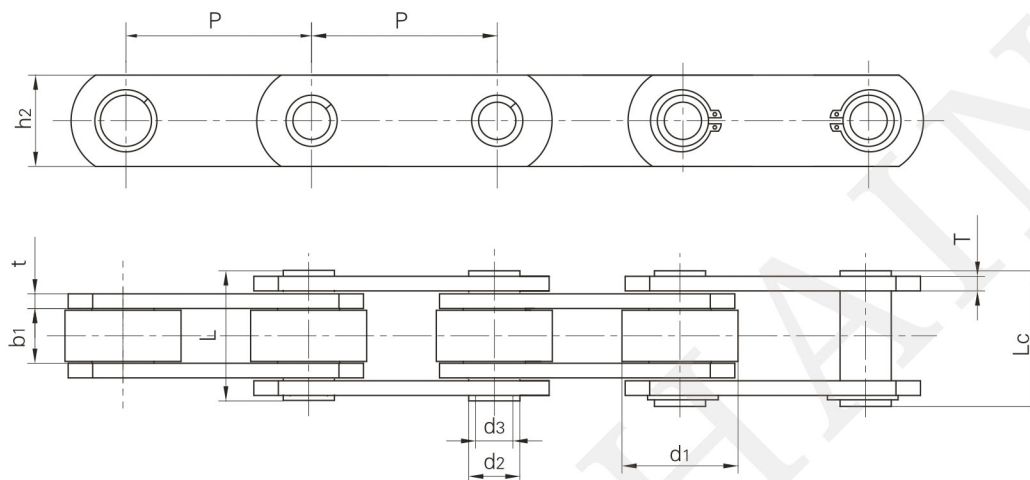
Chain No.	节距 Pitch	滚子直径 Roller diameter	外节内宽 Width between outer plates	销轴直径 Pin diameter			销轴长度 Pin length		内链板高度 Inner plate depth	链板厚度 Plate thickness	极限拉伸载荷 Ultimate tensile strength	平均拉伸载荷 Average tensile strength	每米长重 Weight per meter	型号 Type
	P	d <sub>1</sub> max	b <sub>1</sub> min	d <sub>2</sub> max	d <sub>3</sub> min	L max	L <sub>c</sub> max	h <sub>2</sub> max	t/T max	Q min	Q <sub>0</sub>	q		
	mm	mm	mm	mm	mm	mm	mm	mm	mm	kN/LB	kN	kg/m		
	12.700	8.51	13.20	6.65	5.20	18.0	19.2	11.8	1.6/1.3	10.00/2273	11.4	0.50	A	
	12.700	8.51	13.40	6.65	4.00	19.0	20.2	11.8	1.70	14.00/3182	16.8	0.69	A	
	12.700	8.51	13.40	6.65	4.10	19.0	20.2	11.8	1.70	14.00/3182	16.8	0.69	A	
	15.875	10.16	13.41	7.03	5.00	19.2	20.2	14.0	1.85	17.00/3864	20.6	0.83	A	
	15.875	10.16	10.40	7.03	5.00	17.0	18.0	14.0	1.85	15.00/3409	17.3	0.74	A	
	19.050	12.07	16.00	8.03	5.40	22.7	23.9	15.8	1.85	25.00/5682	28.8	1.09	A	
	25.400	15.88	25.58	11.50	8.10	36.5	37.6	21.0	4.15/3.1	45.00/10227	52.2	2.21	A	
	15.875	10.16	13.60	7.03	5.13	20.7	21.9	14.4	2.03	18.00/4091	21.6	0.92	A	
	19.050	11.91	11.23	5.63	4.05	16.5	17.6	10.4	1.50	10.00/2273	10.8	0.62	A	
	19.050	11.91	17.20	8.40	6.10	24.7	26.0	18.0	2.03	20.00/4546	24.0	1.54	A	
	63.000	40.00	23.50	16.00	12.00	35.3	38.3	28.6	4.00	65.00/14773	71.5	4.14	B	
	63.000	40.00	25.80	14.00	8.08	39.1	41.1	20.0	5.00	50.00/11364	65.7	4.17	B	
	63.000	40.00	23.50	16.00	12.30	34.7	37.7	28.6	4.00	44.00/10000	57.2	4.13	B	
	63.000	40.00	28.94	16.00	10.30	41.8	43.4	28.6	4.00	44.00/10000	57.2	5.18	B	
	76.200	47.60	29.00	17.81	12.70	43.3	44.7	38.1	4.80	53.34/12123	59.2	7.05	B	



## 空心链 Hollow pin chains

### 非标空心销轴输送链

Non-standard hollow pin conveyor chains



	80.00	30.00	24.00	16.00	10.20	45.5	47.0	35.0	4.0	56.0/12600	62.0	4.64
	100.00	50.00	23.00	16.00	10.20	45.5	47.0	35.0	4.0	56.0/12600	62.0	6.27
	100.00	70.00	32.00	22.00	16.30	67.0	68.5	50.0	6.0	112.0/25195	123.2	14.91
	110.00	66.70	25.40	26.90	20.20	58.0	60.5	51.0	7.1/5.1	106.7/24003	118.0	13.50
	40.00	18.00	22.00	12.00	8.20	47.5	49.0	35.0	5.0	46.0/10348	51.0	5.34
	50.00	17.00	22.00	12.00	8.20	41.0	42.0	25.0	3.0	30.0/6750	33.0	2.24
	63.00	40.00	22.00	11.70	8.10	44.0	46.0	30.0	4.0	46.0/10348	51.0	5.83
	63.00	42.00	25.00	14.00	10.20	52.0	53.5	35.0	5.0	73.0/16422	80.0	5.33
	80.00	26.00	35.00	18.00	12.50	65.0	67.0	46.0	6.0	110.0/24745	120.0	7.80



劲普机械

Jinpu Mechanical

Address: Room 417-1, Building 8, No. 5-4 Yunhe Road, Chongxian Street,  
Yuhang District, Hangzhou City, Zhejiang Province, China.

Tel: 86-(0)571-88277778

Fax: 86-(0)571-85853285

E-mail: [info@jpmach.com](mailto:info@jpmach.com)

Website: [www.jpmach.com](http://www.jpmach.com)